

Алматы (7273)495-231  
Ангарск (3955)60-70-56  
Архангельск (8182)63-90-72  
Астрахань (8512)99-46-04  
Барнаул (3852)73-04-60  
Белгород (4722)40-23-64  
Благовещенск (4162)22-76-07  
Брянск (4832)59-03-52  
Владивосток (423)249-28-31  
Владикавказ (8672)28-90-48  
Владимир (4922) 49-43-18  
Волгоград (844)278-03-48  
Вологда (8172)26-41-59  
Воронеж (473)204-51-73  
Екатеринбург (343)384-55-89

Ижевск (3412)26-03-58  
Иваново (4932)77-34-06  
Иркутск (395)279-98-46  
Казань (843)206-01-48  
Калининград (4012)72-03-81  
Калуга (4842)92-23-67  
Кемерово (3842)65-04-62  
Киров (8332)68-02-04  
Коломна (4966)23-41-49  
Кострома (4942)77-07-48  
Краснодар (861)203-40-90  
Красноярск (391)204-63-61  
Курск (4712)77-13-04  
Курган (3522)50-90-47  
Липецк (4742)52-20-81

Магнитогорск (3519)55-03-13  
Москва (495)268-04-70  
Мурманск (8152)59-64-93  
Набережные Челны (8552)20-53-41  
Нижний Новгород (831)429-08-12  
Новокузнецк (3843)20-46-81  
Новосибирск (383)227-86-73  
Ноябрьск (3496)41-32-12  
Омск (3812)21-46-40  
Орел (4862)44-53-42  
Оренбург (3532)37-68-04  
Пенза (8412)22-31-16  
Петрозаводск (8142)55-98-37  
Псков (8112)59-10-37

Пермь (342)205-81-47  
Ростов-на-Дону (863)308-18-15  
Рязань (4912)46-61-64  
Самара (846)206-03-16  
Саранск (8342)22-96-24  
Санкт-Петербург (812)309-46-40  
Саратов (845)249-38-78  
Севастополь (8692)22-31-93  
Симферополь (3652)67-13-56  
Смоленск (4812)29-41-54  
Сочи (862)225-72-31  
Ставрополь (8652)20-65-13  
Сыктывкар (8212)25-95-17  
Сургут (3462)77-98-35  
Тамбов (4752)50-40-97

Тверь (4822)63-31-35  
Тольяти (8482)63-91-07  
Томск (3822)98-41-53  
Тула (4872)33-79-87  
Тюмень (3452)66-21-18  
Улан-Удэ (3012)59-97-51  
Ульяновск (8422)24-23-59  
Уфа (347)229-48-12  
Хабаровск (4212)92-98-04  
Чебоксары (8352)28-53-07  
Челябинск (351)202-03-61  
Череповец (8202)49-02-64  
Чита (3022)38-34-83  
Якутск (4112)23-90-97  
Ярославль (4852)69-52-93

Киргизия (996)312-96-26-47





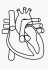


Россия (495)268-04-70

Казахстан (772)734-952-31

<https://optoedu.nt-rt.ru> || [oue@nt-rt.ru](mailto:oue@nt-rt.ru)

## Модели частей человека E32

### E32 Human Model

	E3A Torso & Extremities
	E3B Musculature
	E3C Skeletal System
	E3D Brain & Nervous System
	E3E Respiratory System
	E3F Circulatory System
	E3G Digestive System
	E3H Urinary & Reproductive



E3I Eye



E3J Ear



E3K Teeth



E3L Other Organs



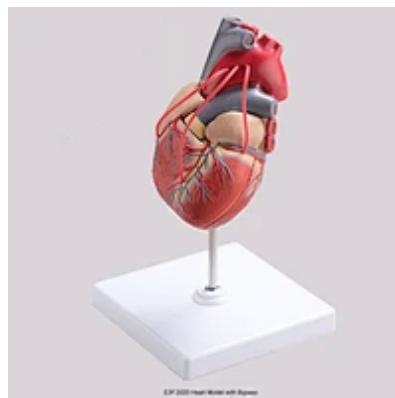
E3M Pathological



**E3D.2040**

Colored Right Brain Model

17.5\*14\*10cm



**E3F.2020**

Heart Model with Bypass

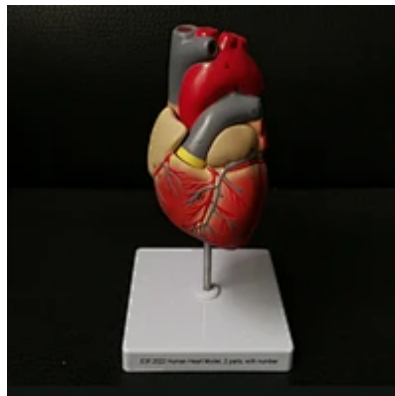
13\*13\*16cm



**E3I.2010**

Half Eye Ball Model, 3 parts, without the card

17.5\*14\*10cm



**E3F.2022**

Human Heart Model, 2 parts, with number

13\*13\*16cm



**E3F.2021**

Human Heart Model, 2 parts

13\*13\*16cm



**E3H.2053**

Human Development Set, 8 parts



**E3H.2052**

Male Pelvis, 2 parts

23\*20\*18cm



**E3H.2051**

Female Pelvis, 2 parts

23\*20\*18cm



**E3F.1910**

## Heart/Artery Model

with 1 color logo imprint on base, full colors printed stickers on both sides of backer. Packing: Each in white box (Knock-down pack). Then into export carton.



**E3C.1950**

## Skull Model of 8 Kinds Ape-Man

with 1 color logo imprint on base, full colors printed stickers on both sides of backer. Packing: Each in white box (Knock-down pack). Then into export carton.



### E3J.1909

## Ear,5 parts

3X life size. The model shows the external, middle and inner ear. The eardrum with malleus, incus and stapes are removable. The other removable parts are composed of: cochlea and labyrinth with vestibular and cochlear nerves, 2 bone sections that define the middle and inner ear.



### E3D.1908-A

## Head Dissection, 4 Parts

Размер 32x10x29см.



E3F.0001 Human Heart Pumping Model

**E3F.0001**

## Human Heart Pumping Model

Размер 32x10x29см.



E3C.1948 Life Size Skull With Brain, 8 Parts

**E3C.1948**

## Life Size Skull With Brain, 8 Parts

with 1 color logo imprint on base, full colors printed stickers on both sides of backer. Packing: Each in white box (Knock-down pack). Then into export carton.





E3K.1909 Lower Molar With Caries

### E3K.1909

## Lower Molar With Caries

This 1 piece model is approximately 10x life size, it shows the most important dental pathologies, including dental caries, pulpitis, gingivitis and periapical periodontitis.



E3M.2010 Burn Dressing Model

### E3M.2010

## Burn Dressing Model

with 1 color logo imprint on base, full colors printed stickers on both sides of backer. Packing: Each in white box (Knock-down pack). Then into export carton.



**E3G.2701**

## Human Liver Pancreas and Duodenum

with 1 color logo imprint on base, full colors printed stickers on both sides of backer. Packing: Each in white box (Knock-down pack). Then into export carton.



**E3K.1908**

## Human Teeth Model, Set of 5, 3x

Five different models illustrate every major tooth type.  
Each model magnified 8x



E3C.1946 Human Foot And Ankle Joint Model

### E3C.1946

## Human Foot And Ankle Joint Model

with 1 color logo imprint on base, full colors printed stickers on both sides of backer. Packing: Each in white box (Knock-down pack). Then into export carton.

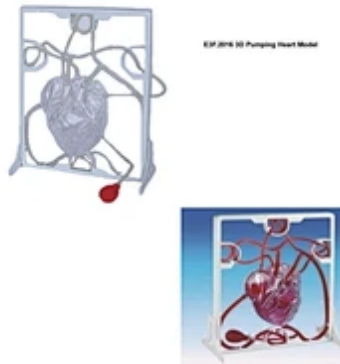


E3C.1947 Human Hand And Wrist Joint Model

### E3C.1947

## Human Hand And Wrist Joint Model

with 1 color logo imprint on base, full colors printed stickers on both sides of backer. Packing: Each in white box (Knock-down pack). Then into export carton.



**E3F.2016**

## 3D Pumping Heart Model

Size 22\*12\*8.5 Squeeze bulb pumps simulated blood through clear heart chambers.

Veins and Arteries of clear tubing connect to body parts shown by the engravings on the display stand. You can detail the veins and arteries for a more realistic look with supplies paints .



**E3F.1903**

## Enlarged Heart 4 parts

with 1 color logo imprint on base, full colors printed stickers on both sides of backer. Packing: Each in white box (Knock-down pack). Then into export carton.



**E3G.1914**

## Human Digestive System, 3 Parts

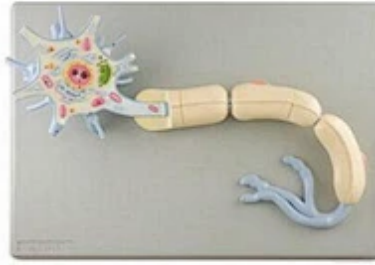
Life Size, 3 Parts



**E3C.1945**

## Human Skeleton

Life size on base with wheels This model is a replica of a life size human skeleton and shows all the skeleton parts in high details. It's hand-assembled to provide intricate details and long-lasting durability. The main joints are articulated; the upper and lower limbs can be removed easily. The following parts are detachable: Calvarium, Skull, Jaw, Arms, Legs.



**E3D.1932**

## Neuron, 2 Parts

Life size on base with wheels This model is a replica of a life size human skeleton and shows all the skeleton parts in high details. It's hand-assembled to provide intricate details and long-lasting durability. The main joints are articulated; the upper and lower limbs can be removed easily. The following parts are detachable: Calvarium, Skull, Jaw, Arms, Legs.



**E32.9001**

## Wood Manikin Model

Life size on base with wheels This model is a replica of a life size human skeleton and shows all the skeleton parts in high details. It's hand-assembled to provide intricate details and long-lasting durability. The main joints are articulated; the upper and lower limbs can be removed easily. The following parts are detachable: Calvarium, Skull, Jaw, Arms, Legs.



**E3L.2009**

## Human Skin

Life size on base with wheels This model is a replica of a life size human skeleton and shows all the skeleton parts in high details. It's hand-assembled to provide intricate details and long-lasting durability. The main joints are articulated; the upper and lower limbs can be removed easily. The following parts are detachable: Calvarium, Skull, Jaw, Arms, Legs.



**E3E.1916**

## Human Alveoli Model

Life size on base with wheels This model is a replica of a life size human skeleton and shows all the skeleton parts in high details. It's hand-assembled to provide intricate details and long-lasting durability. The main joints are articulated; the upper and lower limbs can be removed easily. The following parts are detachable: Calvarium, Skull, Jaw, Arms, Legs.



**E3F.1909**

## Heart Model, Nature Size, 2 Parts

Life size on base with wheels This model is a replica of a life size human skeleton and shows all the skeleton parts in high details. It's hand-assembled to provide intricate details and long-lasting durability. The main joints are articulated; the upper and lower limbs can be removed easily. The following parts are detachable: Calvarium, Skull, Jaw, Arms, Legs.



**E3F.1908**

## Arterial and Nervous Model

Life size on base with wheels This model is a replica of a life size human skeleton and shows all the skeleton parts in high details. It's hand-assembled to provide intricate details and long-lasting durability. The main joints are articulated; the upper and lower limbs can be removed easily. The following parts are detachable: Calvarium, Skull, Jaw, Arms, Legs.



**E3D.1934**

## Enlarged Neuron Model

Life size on base with wheels This model is a replica of a life size human skeleton and shows all the skeleton parts in high details. It's hand-assembled to provide intricate details and long-lasting durability. The main joints are articulated; the upper and lower limbs can be removed easily. The following parts are detachable: Calvarium, Skull, Jaw, Arms, Legs.



**E3E.0101**

## Lungs and Respiration Model

Life size on base with wheels This model is a replica of a life size human skeleton and shows all the skeleton parts in high details. It's hand-assembled to provide intricate details and long-lasting durability. The main joints are articulated; the upper and lower limbs can be removed easily. The following parts are detachable: Calvarium, Skull, Jaw, Arms, Legs.



**E3E.0102**

## Lungs and Respiration Model

Life size on base with wheels This model is a replica of a life size human skeleton and shows all the skeleton parts in high details. It's hand-assembled to provide intricate details and long-lasting durability. The main joints are articulated; the upper and lower limbs can be removed easily. The following parts are detachable: Calvarium, Skull, Jaw, Arms, Legs.



**E3M.2009**

## Classified Parodontosis Model

Life size on base with wheels This model is a replica of a life size human skeleton and shows all the skeleton parts in high details. It's hand-assembled to provide intricate details and long-lasting durability. The main joints are articulated; the upper and lower limbs can be removed easily. The following parts are detachable: Calvarium, Skull, Jaw, Arms, Legs.



**E3M.2006**

## Health and Disease arteries

Life size on base with wheels This model is a replica of a life size human skeleton and shows all the skeleton parts in high details. It's hand-assembled to provide intricate details and long-lasting durability. The main joints are articulated; the upper and lower limbs can be removed easily. The following parts are detachable: Calvarium, Skull, Jaw, Arms, Legs.



**E3M.2007**

## Disease Liver Model

Life size on base with wheels This model is a replica of a life size human skeleton and shows all the skeleton parts in high details. It's hand-assembled to provide intricate details and long-lasting durability. The main joints are articulated; the upper and lower limbs can be removed easily. The following parts are detachable: Calvarium, Skull, Jaw, Arms, Legs.



**E3M.2004**

## Teeth Model Widescription Plate

Life size on base with wheels This model is a replica of a life size human skeleton and shows all the skeleton parts in high details. It's hand-assembled to provide intricate details and long-lasting durability. The main joints are articulated; the upper and lower limbs can be removed easily. The following parts are detachable: Calvarium, Skull, Jaw, Arms, Legs.



**E3M.2005**

## Cutaway Osteoporosis

Life size on base with wheels This model is a replica of a life size human skeleton and shows all the skeleton parts in high details. It's hand-assembled to provide intricate details and long-lasting durability. The main joints are articulated; the upper and lower limbs can be removed easily. The following parts are detachable: Calvarium, Skull, Jaw, Arms, Legs.



### E3M.2002

## Hypertension model 8 model

Life size on base with wheels This model is a replica of a life size human skeleton and shows all the skeleton parts in high details. It's hand-assembled to provide intricate details and long-lasting durability. The main joints are articulated; the upper and lower limbs can be removed easily. The following parts are detachable: Calvarium, Skull, Jaw, Arms, Legs.



### E3M.2003

## Hypertension model 5 model

Life size on base with wheels This model is a replica of a life size human skeleton and shows all the skeleton parts in high details. It's hand-assembled to provide intricate details and long-lasting durability. The main joints are articulated; the upper and lower limbs can be removed easily. The following parts are detachable: Calvarium, Skull, Jaw, Arms, Legs.



**E3L.2008**

## Human Lymph Node

Life size on base with wheels This model is a replica of a life size human skeleton and shows all the skeleton parts in high details. It's hand-assembled to provide intricate details and long-lasting durability. The main joints are articulated; the upper and lower limbs can be removed easily. The following parts are detachable: Calvarium, Skull, Jaw, Arms, Legs.



**E3M.2001**

## Hypertension model 6 model

Life size on base with wheels This model is a replica of a life size human skeleton and shows all the skeleton parts in high details. It's hand-assembled to provide intricate details and long-lasting durability. The main joints are articulated; the upper and lower limbs can be removed easily. The following parts are detachable: Calvarium, Skull, Jaw, Arms, Legs.



**E3L.2007**

## Human Lymph Node

Life size on base with wheels This model is a replica of a life size human skeleton and shows all the skeleton parts in high details. It's hand-assembled to provide intricate details and long-lasting durability. The main joints are articulated; the upper and lower limbs can be removed easily. The following parts are detachable: Calvarium, Skull, Jaw, Arms, Legs.



**E3L.2006**

## Human Lymph Node

Life size on base with wheels This model is a replica of a life size human skeleton and shows all the skeleton parts in high details. It's hand-assembled to provide intricate details and long-lasting durability. The main joints are articulated; the upper and lower limbs can be removed easily. The following parts are detachable: Calvarium, Skull, Jaw, Arms, Legs.



E3L.2003

### E3L.2003

## Small Solid Health Skin

Life size on base with wheels This model is a replica of a life size human skeleton and shows all the skeleton parts in high details. It's hand-assembled to provide intricate details and long-lasting durability. The main joints are articulated; the upper and lower limbs can be removed easily. The following parts are detachable: Calvarium, Skull, Jaw, Arms, Legs.



E3L.2004

### E3L.2004

## Small Solid Health Skin

Life size on base with wheels This model is a replica of a life size human skeleton and shows all the skeleton parts in high details. It's hand-assembled to provide intricate details and long-lasting durability. The main joints are articulated; the upper and lower limbs can be removed easily. The following parts are detachable: Calvarium, Skull, Jaw, Arms, Legs.





E3L.2005

### E3L.2005

## Big Solid Health Skin w/hair

Life size on base with wheels This model is a replica of a life size human skeleton and shows all the skeleton parts in high details. It's hand-assembled to provide intricate details and long-lasting durability. The main joints are articulated; the upper and lower limbs can be removed easily. The following parts are detachable: Calvarium, Skull, Jaw, Arms, Legs.



E3L.2002

### E3L.2002

## Human Skin

Life size on base with wheels This model is a replica of a life size human skeleton and shows all the skeleton parts in high details. It's hand-assembled to provide intricate details and long-lasting durability. The main joints are articulated; the upper and lower limbs can be removed easily. The following parts are detachable: Calvarium, Skull, Jaw, Arms, Legs.



E3L.2001

**E3L.2001**

## Human Skin

Life size on base with wheels This model is a replica of a life size human skeleton and shows all the skeleton parts in high details. It's hand-assembled to provide intricate details and long-lasting durability. The main joints are articulated; the upper and lower limbs can be removed easily. The following parts are detachable: Calvarium, Skull, Jaw, Arms, Legs.



E3K.2013

**E3K.2013**

## Human Tooth

Life size on base with wheels This model is a replica of a life size human skeleton and shows all the skeleton parts in high details. It's hand-assembled to provide intricate details and long-lasting durability. The main joints are articulated; the upper and lower limbs can be removed easily. The following parts are detachable: Calvarium, Skull, Jaw, Arms, Legs.



E3K.2014

**E3K.2014**

## Human Tooth

Life size on base with wheels This model is a replica of a life size human skeleton and shows all the skeleton parts in high details. It's hand-assembled to provide intricate details and long-lasting durability. The main joints are articulated; the upper and lower limbs can be removed easily. The following parts are detachable: Calvarium, Skull, Jaw, Arms, Legs.



E3K.2011

**E3K.2011**

## The Tooth Tissue Model

Life size on base with wheels This model is a replica of a life size human skeleton and shows all the skeleton parts in high details. It's hand-assembled to provide intricate details and long-lasting durability. The main joints are articulated; the upper and lower limbs can be removed easily. The following parts are detachable: Calvarium, Skull, Jaw, Arms, Legs.



**E3K.2012**

## Human Tooth Set

Life size on base with wheels This model is a replica of a life size human skeleton and shows all the skeleton parts in high details. It's hand-assembled to provide intricate details and long-lasting durability. The main joints are articulated; the upper and lower limbs can be removed easily. The following parts are detachable: Calvarium, Skull, Jaw, Arms, Legs.



**E3K.2008**

## Clear Mixed Dentition

Life size on base with wheels This model is a replica of a life size human skeleton and shows all the skeleton parts in high details. It's hand-assembled to provide intricate details and long-lasting durability. The main joints are articulated; the upper and lower limbs can be removed easily. The following parts are detachable: Calvarium, Skull, Jaw, Arms, Legs.



E3K.2010

**E3K.2010**

## 3D Human Tooth Model

Life size on base with wheels This model is a replica of a life size human skeleton and shows all the skeleton parts in high details. It's hand-assembled to provide intricate details and long-lasting durability. The main joints are articulated; the upper and lower limbs can be removed easily. The following parts are detachable: Calvarium, Skull, Jaw, Arms, Legs.



E3K.2006

**E3K.2006**

## Tooth Hygiene Set

Life size on base with wheels This model is a replica of a life size human skeleton and shows all the skeleton parts in high details. It's hand-assembled to provide intricate details and long-lasting durability. The main joints are articulated; the upper and lower limbs can be removed easily. The following parts are detachable: Calvarium, Skull, Jaw, Arms, Legs.



E3K.2007

**E3K.2007**

## Metal bracket orthodontics model

Life size on base with wheels This model is a replica of a life size human skeleton and shows all the skeleton parts in high details. It's hand-assembled to provide intricate details and long-lasting durability. The main joints are articulated; the upper and lower limbs can be removed easily. The following parts are detachable: Calvarium, Skull, Jaw, Arms, Legs.



E3K.2005

**E3K.2005**

## Small Tooth Hygiene

Life size on base with wheels This model is a replica of a life size human skeleton and shows all the skeleton parts in high details. It's hand-assembled to provide intricate details and long-lasting durability. The main joints are articulated; the upper and lower limbs can be removed easily. The following parts are detachable: Calvarium, Skull, Jaw, Arms, Legs.



### E3K.2003

## Half Lower Jaw

Life size on base with wheels This model is a replica of a life size human skeleton and shows all the skeleton parts in high details. It's hand-assembled to provide intricate details and long-lasting durability. The main joints are articulated; the upper and lower limbs can be removed easily. The following parts are detachable: Calvarium, Skull, Jaw, Arms, Legs.



### E3K.2004

## Tooth Hygiene Set

Life size on base with wheels This model is a replica of a life size human skeleton and shows all the skeleton parts in high details. It's hand-assembled to provide intricate details and long-lasting durability. The main joints are articulated; the upper and lower limbs can be removed easily. The following parts are detachable: Calvarium, Skull, Jaw, Arms, Legs.



E3K.2001

### E3K.2001

## Model of Dentition Development

Life size on base with wheels This model is a replica of a life size human skeleton and shows all the skeleton parts in high details. It's hand-assembled to provide intricate details and long-lasting durability. The main joints are articulated; the upper and lower limbs can be removed easily. The following parts are detachable: Calvarium, Skull, Jaw, Arms, Legs.



E3K.2002

### E3K.2002

## Model of Dentition Development

Life size on base with wheels This model is a replica of a life size human skeleton and shows all the skeleton parts in high details. It's hand-assembled to provide intricate details and long-lasting durability. The main joints are articulated; the upper and lower limbs can be removed easily. The following parts are detachable: Calvarium, Skull, Jaw, Arms, Legs.





E3J.2010

**E3J.2010**

## Human Inner Ear

Life size on base with wheels This model is a replica of a life size human skeleton and shows all the skeleton parts in high details. It's hand-assembled to provide intricate details and long-lasting durability. The main joints are articulated; the upper and lower limbs can be removed easily. The following parts are detachable: Calvarium, Skull, Jaw, Arms, Legs.



E3J.2008

**E3J.2008**

## Human Ear

Life size on base with wheels This model is a replica of a life size human skeleton and shows all the skeleton parts in high details. It's hand-assembled to provide intricate details and long-lasting durability. The main joints are articulated; the upper and lower limbs can be removed easily. The following parts are detachable: Calvarium, Skull, Jaw, Arms, Legs.



**E3J.2009**

## Human Inner Ear

Life size on base with wheels This model is a replica of a life size human skeleton and shows all the skeleton parts in high details. It's hand-assembled to provide intricate details and long-lasting durability. The main joints are articulated; the upper and lower limbs can be removed easily. The following parts are detachable: Calvarium, Skull, Jaw, Arms, Legs.



**E3J.2006**

## Human Ear

Life size on base with wheels This model is a replica of a life size human skeleton and shows all the skeleton parts in high details. It's hand-assembled to provide intricate details and long-lasting durability. The main joints are articulated; the upper and lower limbs can be removed easily. The following parts are detachable: Calvarium, Skull, Jaw, Arms, Legs.



**E3J.2007**

## Human Ear

Life size on base with wheels This model is a replica of a life size human skeleton and shows all the skeleton parts in high details. It's hand-assembled to provide intricate details and long-lasting durability. The main joints are articulated; the upper and lower limbs can be removed easily. The following parts are detachable: Calvarium, Skull, Jaw, Arms, Legs.



**E3J.2005**

## Human Ear, 5X

Life size on base with wheels This model is a replica of a life size human skeleton and shows all the skeleton parts in high details. It's hand-assembled to provide intricate details and long-lasting durability. The main joints are articulated; the upper and lower limbs can be removed easily. The following parts are detachable: Calvarium, Skull, Jaw, Arms, Legs.



**E3J.2004**

## Human Ear

Life size on base with wheels This model is a replica of a life size human skeleton and shows all the skeleton parts in high details. It's hand-assembled to provide intricate details and long-lasting durability. The main joints are articulated; the upper and lower limbs can be removed easily. The following parts are detachable: Calvarium, Skull, Jaw, Arms, Legs.



**E3J.2002**

## Human Ear

Life size on base with wheels This model is a replica of a life size human skeleton and shows all the skeleton parts in high details. It's hand-assembled to provide intricate details and long-lasting durability. The main joints are articulated; the upper and lower limbs can be removed easily. The following parts are detachable: Calvarium, Skull, Jaw, Arms, Legs.



**E3J.2003**

## Human Ear

Life size on base with wheels This model is a replica of a life size human skeleton and shows all the skeleton parts in high details. It's hand-assembled to provide intricate details and long-lasting durability. The main joints are articulated; the upper and lower limbs can be removed easily. The following parts are detachable: Calvarium, Skull, Jaw, Arms, Legs.



**E3I.2007**

## Eye in orbit

Life size on base with wheels This model is a replica of a life size human skeleton and shows all the skeleton parts in high details. It's hand-assembled to provide intricate details and long-lasting durability. The main joints are articulated; the upper and lower limbs can be removed easily. The following parts are detachable: Calvarium, Skull, Jaw, Arms, Legs.



**E3J.2001**

## Model of Human Ear

Life size on base with wheels This model is a replica of a life size human skeleton and shows all the skeleton parts in high details. It's hand-assembled to provide intricate details and long-lasting durability. The main joints are articulated; the upper and lower limbs can be removed easily. The following parts are detachable: Calvarium, Skull, Jaw, Arms, Legs.



**E3I.2006**

## Eye in orbit, 8-part

Life size on base with wheels This model is a replica of a life size human skeleton and shows all the skeleton parts in high details. It's hand-assembled to provide intricate details and long-lasting durability. The main joints are articulated; the upper and lower limbs can be removed easily. The following parts are detachable: Calvarium, Skull, Jaw, Arms, Legs.



E3I.2003

### E3I.2003

## Human Eye, 6 Times, 6 Parts

Life size on base with wheels This model is a replica of a life size human skeleton and shows all the skeleton parts in high details. It's hand-assembled to provide intricate details and long-lasting durability. The main joints are articulated; the upper and lower limbs can be removed easily. The following parts are detachable: Calvarium, Skull, Jaw, Arms, Legs.



E3I.2004

### E3I.2004

## Human Eye

Life size on base with wheels This model is a replica of a life size human skeleton and shows all the skeleton parts in high details. It's hand-assembled to provide intricate details and long-lasting durability. The main joints are articulated; the upper and lower limbs can be removed easily. The following parts are detachable: Calvarium, Skull, Jaw, Arms, Legs.



E3I.2005

### E3I.2005

## Human Eye

Life size on base with wheels This model is a replica of a life size human skeleton and shows all the skeleton parts in high details. It's hand-assembled to provide intricate details and long-lasting durability. The main joints are articulated; the upper and lower limbs can be removed easily. The following parts are detachable: Calvarium, Skull, Jaw, Arms, Legs.



E3I.2002

### E3I.2002

## Human Functional Eye

Life size on base with wheels This model is a replica of a life size human skeleton and shows all the skeleton parts in high details. It's hand-assembled to provide intricate details and long-lasting durability. The main joints are articulated; the upper and lower limbs can be removed easily. The following parts are detachable: Calvarium, Skull, Jaw, Arms, Legs.





**E3I.2001**

## Human Functional Eye

Life size on base with wheels This model is a replica of a life size human skeleton and shows all the skeleton parts in high details. It's hand-assembled to provide intricate details and long-lasting durability. The main joints are articulated; the upper and lower limbs can be removed easily. The following parts are detachable: Calvarium, Skull, Jaw, Arms, Legs.



**E3H.2019**

## Human Male Half Pelvis

Life size on base with wheels This model is a replica of a life size human skeleton and shows all the skeleton parts in high details. It's hand-assembled to provide intricate details and long-lasting durability. The main joints are articulated; the upper and lower limbs can be removed easily. The following parts are detachable: Calvarium, Skull, Jaw, Arms, Legs.



**E3H.2020**

## Human female Half Pelvis

Life size on base with wheels This model is a replica of a life size human skeleton and shows all the skeleton parts in high details. It's hand-assembled to provide intricate details and long-lasting durability. The main joints are articulated; the upper and lower limbs can be removed easily. The following parts are detachable: Calvarium, Skull, Jaw, Arms, Legs.



**E3H.2017**

## Natural Uterus

Life size on base with wheels This model is a replica of a life size human skeleton and shows all the skeleton parts in high details. It's hand-assembled to provide intricate details and long-lasting durability. The main joints are articulated; the upper and lower limbs can be removed easily. The following parts are detachable: Calvarium, Skull, Jaw, Arms, Legs.



### E3H.2018

## Electronic Model of Urine Formation

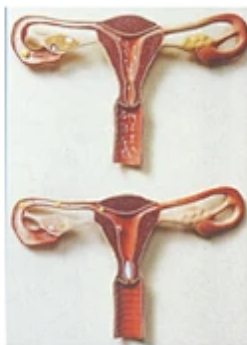
Life size on base with wheels This model is a replica of a life size human skeleton and shows all the skeleton parts in high details. It's hand-assembled to provide intricate details and long-lasting durability. The main joints are articulated; the upper and lower limbs can be removed easily. The following parts are detachable: Calvarium, Skull, Jaw, Arms, Legs.



### E3H.2015

## Human Female Urogenital System

Life size on base with wheels This model is a replica of a life size human skeleton and shows all the skeleton parts in high details. It's hand-assembled to provide intricate details and long-lasting durability. The main joints are articulated; the upper and lower limbs can be removed easily. The following parts are detachable: Calvarium, Skull, Jaw, Arms, Legs.



**E3H.2016**

## Human Fygde, Clearag and development Process

Life size on base with wheels This model is a replica of a life size human skeleton and shows all the skeleton parts in high details. It's hand-assembled to provide intricate details and long-lasting durability. The main joints are articulated; the upper and lower limbs can be removed easily. The following parts are detachable: Calvarium, Skull, Jaw, Arms, Legs.



**E3H.2013**

## Human Male Urogenital System

Life size on base with wheels This model is a replica of a life size human skeleton and shows all the skeleton parts in high details. It's hand-assembled to provide intricate details and long-lasting durability. The main joints are articulated; the upper and lower limbs can be removed easily. The following parts are detachable: Calvarium, Skull, Jaw, Arms, Legs.



E3H.2014

**E3H.2014**

## Human Urinary System Model

Life size on base with wheels This model is a replica of a life size human skeleton and shows all the skeleton parts in high details. It's hand-assembled to provide intricate details and long-lasting durability. The main joints are articulated; the upper and lower limbs can be removed easily. The following parts are detachable: Calvarium, Skull, Jaw, Arms, Legs.



E3H.2012

**E3H.2012**

## Model of Anat Perineum(female)

Life size on base with wheels This model is a replica of a life size human skeleton and shows all the skeleton parts in high details. It's hand-assembled to provide intricate details and long-lasting durability. The main joints are articulated; the upper and lower limbs can be removed easily. The following parts are detachable: Calvarium, Skull, Jaw, Arms, Legs.



E3H.2010

**E3H.2010**

## Human Pregnant Uterus

Life size on base with wheels This model is a replica of a life size human skeleton and shows all the skeleton parts in high details. It's hand-assembled to provide intricate details and long-lasting durability. The main joints are articulated; the upper and lower limbs can be removed easily. The following parts are detachable: Calvarium, Skull, Jaw, Arms, Legs.



E3H.2011

**E3H.2011**

## Model of Anat Perineum(male)

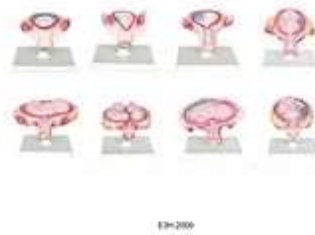
Life size on base with wheels This model is a replica of a life size human skeleton and shows all the skeleton parts in high details. It's hand-assembled to provide intricate details and long-lasting durability. The main joints are articulated; the upper and lower limbs can be removed easily. The following parts are detachable: Calvarium, Skull, Jaw, Arms, Legs.



### E3H.2008

## Human Parturition

Life-Size This model is an exact life-size model and shows all parts in great detail. It is hand assembled to ensure intricate detailing and durability. The main parts are hinged and can be easily removed.



### E3H.2009

## Human Development Set

Life-Size This model is an exact life-size model and shows all parts in great detail. It is hand assembled to ensure intricate detailing and durability. The main parts are hinged and can be easily removed.



E3H.2007

### E3H.2007

## Human Pregnant Uterus

Life-Size This model is an exact life-size model and shows all parts in great detail. It is hand assembled to ensure intricate detailing and durability. The main parts are hinged and can be easily removed.



E3H.2006

### E3H.2006

## Human Kidney, Nephron and Glomerulus

Life-Size This model is an exact life-size model and shows all parts in great detail. It is hand assembled to ensure intricate detailing and durability. The main parts are hinged and can be easily removed.





E3H.2004

### E3H.2004

## Human Kidney, Nephron and Glomerulus

Life-Size This model is an exact life-size model and shows all parts in great detail. It is hand assembled to ensure intricate detailing and durability. The main parts are hinged and can be easily removed.



E3H.2005

### E3H.2005

## Human Kidney, Nephron and Glomerulus

Life-Size This model is an exact life-size model and shows all parts in great detail. It is hand assembled to ensure intricate detailing and durability. The main parts are hinged and can be easily removed.



E3H.2002

### E3H.2002

## Human Kidney with Adrenal Gland

Life-Size This model is an exact life-size model and shows all parts in great detail. It is hand assembled to ensure intricate detailing and durability. The main parts are hinged and can be easily removed.



E3H.2003

### E3H.2003

## Human Kidney with Adrenal Gland

Life-Size This model is an exact life-size model and shows all parts in great detail. It is hand assembled to ensure intricate detailing and durability. The main parts are hinged and can be easily removed.



E3G.2007

### E3G.2007

## Model of Human Liver

Life-Size This model is an exact life-size model and shows all parts in great detail. It is hand assembled to ensure intricate detailing and durability. The main parts are hinged and can be easily removed.



E3G.2009

### E3G.2009

## Model of Spleen Pancreas and Duodenum

Life-Size This model is an exact life-size model and shows all parts in great detail. It is hand assembled to ensure intricate detailing and durability. The main parts are hinged and can be easily removed.



E3H.2001

### E3H.2001

## Human Kidney

Life-Size This model is an exact life-size model and shows all parts in great detail. It is hand assembled to ensure intricate detailing and durability. The main parts are hinged and can be easily removed.



E3G.2006

### E3G.2006

## Human Liver Pancreas and Duodenum

Life-Size This model is an exact life-size model and shows all parts in great detail. It is hand assembled to ensure intricate detailing and durability. The main parts are hinged and can be easily removed.



E3G.2005

### E3G.2005

## Digestive System

Life-Size This model is an exact life-size model and shows all parts in great detail. It is hand assembled to ensure intricate detailing and durability. The main parts are hinged and can be easily removed.



E3G.2004

### E3G.2004

## Model of big intestine inner structure

Life-Size This model is an exact life-size model and shows all parts in great detail. It is hand assembled to ensure intricate detailing and durability. The main parts are hinged and can be easily removed.



E3G.2002

### E3G.2002

## Human Stomach

Life-Size This model is an exact life-size model and shows all parts in great detail. It is hand assembled to ensure intricate detailing and durability. The main parts are hinged and can be easily removed.



E3G.2003

### E3G.2003

## Human Stomach

Life-Size This model is an exact life-size model and shows all parts in great detail. It is hand assembled to ensure intricate detailing and durability. The main parts are hinged and can be easily removed.



E3F.2015

### E3F.2015

## Blood Circulation System

Life-Size This model is an exact life-size model and shows all parts in great detail. It is hand assembled to ensure intricate detailing and durability. The main parts are hinged and can be easily removed.



E3G.2001

### E3G.2001

## Human Stomach

Life-Size This model is an exact life-size model and shows all parts in great detail. It is hand assembled to ensure intricate detailing and durability. The main parts are hinged and can be easily removed.

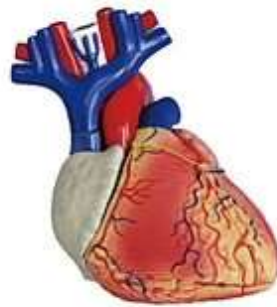


E3F.2014

### E3F.2014

## Blood Circulation System

Life-Size This model is an exact life-size model and shows all parts in great detail. It is hand assembled to ensure intricate detailing and durability. The main parts are hinged and can be easily removed.



E3F.2012

### E3F.2012

## Model of human heart

Life-Size This model is an exact life-size model and shows all parts in great detail. It is hand assembled to ensure intricate detailing and durability. The main parts are hinged and can be easily removed.





E3F.2013

### E3F.2013

## Cardiac Beat and Blood Circulation System

Life-Size This model is an exact life-size model and shows all parts in great detail. It is hand assembled to ensure intricate detailing and durability. The main parts are hinged and can be easily removed.



E3F.2010

### E3F.2010

## Human Heart

Life-Size This model is an exact life-size model and shows all parts in great detail. It is hand assembled to ensure intricate detailing and durability. The main parts are hinged and can be easily removed.



E3F.2011

### E3F.2011

## Human Heart

Life-Size This model is an exact life-size model and shows all parts in great detail. It is hand assembled to ensure intricate detailing and durability. The main parts are hinged and can be easily removed.



E3F.2009

### E3F.2009

## Heart Model

Life-Size This model is an exact life-size model and shows all parts in great detail. It is hand assembled to ensure intricate detailing and durability. The main parts are hinged and can be easily removed.



E3F.2007

### E3F.2007

## Human Heart, 2 Times

Life-Size This model is an exact life-size model and shows all parts in great detail. It is hand assembled to ensure intricate detailing and durability. The main parts are hinged and can be easily removed.



E3F.2008A

E3F.2008B

### E3F.2008

## Human Heart

Life-Size This model is an exact life-size model and shows all parts in great detail. It is hand assembled to ensure intricate detailing and durability. The main parts are hinged and can be easily removed.



E3F.2005

### E3F.2005

## Human Heart

Life-Size This model is an exact life-size model and shows all parts in great detail. It is hand assembled to ensure intricate detailing and durability. The main parts are hinged and can be easily removed.



E3F.2006

### E3F.2006

## Human Heart

Life-Size This model is an exact life-size model and shows all parts in great detail. It is hand assembled to ensure intricate detailing and durability. The main parts are hinged and can be easily removed.



E3F.2004

### E3F.2004

## Human Heart

Life-Size This model is an exact life-size model and shows all parts in great detail. It is hand assembled to ensure intricate detailing and durability. The main parts are hinged and can be easily removed.



E3F.2002

### E3F.2002

## Human Heart

Life-Size This model is an exact life-size model and shows all parts in great detail. It is hand assembled to ensure intricate detailing and durability. The main parts are hinged and can be easily removed.



E3F.2003

### E3F.2003

## Human Heart

Life-Size This model is an exact life-size model and shows all parts in great detail. It is hand assembled to ensure intricate detailing and durability. The main parts are hinged and can be easily removed.



E3F.2001

### E3F.2001

## Human Heart

Life-Size This model is an exact life-size model and shows all parts in great detail. It is hand assembled to ensure intricate detailing and durability. The main parts are hinged and can be easily removed.



KME 2019

### E3E.2019

## Function Human Respiration

Life-Size This model is an exact life-size model and shows all parts in great detail. It is hand assembled to ensure intricate detailing and durability. The main parts are hinged and can be easily removed.



KME 2017

### E3E.2017

## Human Pulmonary Alveoli

Life-Size This model is an exact life-size model and shows all parts in great detail. It is hand assembled to ensure intricate detailing and durability. The main parts are hinged and can be easily removed.

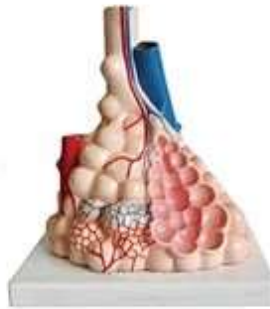


E3E.2018

### E3E.2018

## Human Nasal Cavity

Life-Size This model is an exact life-size model and shows all parts in great detail. It is hand assembled to ensure intricate detailing and durability. The main parts are hinged and can be easily removed.



E3E.2015

### E3E.2015

## Human Pulmonary Alveoli

Life-Size This model is an exact life-size model and shows all parts in great detail. It is hand assembled to ensure intricate detailing and durability. The main parts are hinged and can be easily removed.





E3E.2016

### E3E.2016

## Human Pulmonary Alveoli

Life-Size This model is an exact life-size model and shows all parts in great detail. It is hand assembled to ensure intricate detailing and durability. The main parts are hinged and can be easily removed.



E3E.2014

### E3E.2014

## Human Pulmonary Alveoli

Life-Size This model is an exact life-size model and shows all parts in great detail. It is hand assembled to ensure intricate detailing and durability. The main parts are hinged and can be easily removed.



E3E.2011

### E3E.2011

## Human Respiratory System with Enlarged Model

Life-Size This model is an exact life-size model and shows all parts in great detail. It is hand assembled to ensure intricate detailing and durability. The main parts are hinged and can be easily removed.



E3E.2012

### E3E.2012

## Human Larynx

Life-Size This model is an exact life-size model and shows all parts in great detail. It is hand assembled to ensure intricate detailing and durability. The main parts are hinged and can be easily removed.



KIM-2013

### E3E.2013

## Human Larynx

Life-Size This model is an exact life-size model and shows all parts in great detail. It is hand assembled to ensure intricate detailing and durability. The main parts are hinged and can be easily removed.



KIM-2010

### E3E.2010

## Lung Demonstration Model

Life-Size This model is an exact life-size model and shows all parts in great detail. It is hand assembled to ensure intricate detailing and durability. The main parts are hinged and can be easily removed.



E3E.2008

### E3E.2008

## Human Thoracic Organs

Life-Size This model is an exact life-size model and shows all parts in great detail. It is hand assembled to ensure intricate detailing and durability. The main parts are hinged and can be easily removed.



E3E.2006

### E3E.2006

## anat-trachea/lung Model Widescription Plate

Life-Size This model is an exact life-size model and shows all parts in great detail. It is hand assembled to ensure intricate detailing and durability. The main parts are hinged and can be easily removed.



E3E.2007

### E3E.2007

## anat-trachea/lung Model Widescription Plate

Life-Size This model is an exact life-size model and shows all parts in great detail. It is hand assembled to ensure intricate detailing and durability. The main parts are hinged and can be easily removed.



E3E.2004

### E3E.2004

## The trachea, bronchi and broncho-pulmonary

Life-Size This model is an exact life-size model and shows all parts in great detail. It is hand assembled to ensure intricate detailing and durability. The main parts are hinged and can be easily removed.



E3E.2005

### E3E.2005

## Mix-type Anat-trachea/lung Wide-scription Plate

Life-Size This model is an exact life-size model and shows all parts in great detail. It is hand assembled to ensure intricate detailing and durability. The main parts are hinged and can be easily removed.



E3E.2002

### E3E.2002

## Human Trachea Bronchi and Lung

Life-Size This model is an exact life-size model and shows all parts in great detail. It is hand assembled to ensure intricate detailing and durability. The main parts are hinged and can be easily removed.



E3E.2003

### E3E.2003

## The trachea, bronchi and broncho-pulmonary

Life-Size This model is an exact life-size model and shows all parts in great detail. It is hand assembled to ensure intricate detailing and durability. The main parts are hinged and can be easily removed.



E3D.2029

### E3D.2029

## Nervous Systematic Dissection

Life-Size This model is an exact life-size model and shows all parts in great detail. It is hand assembled to ensure intricate detailing and durability. The main parts are hinged and can be easily removed.



E3E.2001

### E3E.2001

## Human Lungs

Life-Size This model is an exact life-size model and shows all parts in great detail. It is hand assembled to ensure intricate detailing and durability. The main parts are hinged and can be easily removed.



E3D.2028

### E3D.2028

## Neuron Model

Life-Size This model is an exact life-size model and shows all parts in great detail. It is hand assembled to ensure intricate detailing and durability. The main parts are hinged and can be easily removed.





KNO 2026

### E3D.2026

## Enlarged Brain with Arteries Model

Life-Size This model is an exact life-size model and shows all parts in great detail. It is hand assembled to ensure intricate detailing and durability. The main parts are hinged and can be easily removed.



KNO 2027

### E3D.2027

## Human Brain Stem

Life-Size This model is an exact life-size model and shows all parts in great detail. It is hand assembled to ensure intricate detailing and durability. The main parts are hinged and can be easily removed.



E3D.2024

### E3D.2024

## Brain with Arteries

Life-Size This model is an exact life-size model and shows all parts in great detail. It is hand assembled to ensure intricate detailing and durability. The main parts are hinged and can be easily removed.



E3D.2025

### E3D.2025

## Mini Human Brain Model

Life-Size This model is an exact life-size model and shows all parts in great detail. It is hand assembled to ensure intricate detailing and durability. The main parts are hinged and can be easily removed.



E3D.2023

### E3D.2023

## Human Brain

Life-Size This model is an exact life-size model and shows all parts in great detail. It is hand assembled to ensure intricate detailing and durability. The main parts are hinged and can be easily removed.



E3D.2022

### E3D.2022

## Human Brain

Life-Size This model is an exact life-size model and shows all parts in great detail. It is hand assembled to ensure intricate detailing and durability. The main parts are hinged and can be easily removed.



E3D.2020

### E3D.2020

## Human Brain

Life-Size This model is an exact life-size model and shows all parts in great detail. It is hand assembled to ensure intricate detailing and durability. The main parts are hinged and can be easily removed.



E3D.2021

### E3D.2021

## Human Neuro-Anatomical Brain

Life-Size This model is an exact life-size model and shows all parts in great detail. It is hand assembled to ensure intricate detailing and durability. The main parts are hinged and can be easily removed.



E3D.2018

### E3D.2018

## Human Brain

Life-Size This model is an exact life-size model and shows all parts in great detail. It is hand assembled to ensure intricate detailing and durability. The main parts are hinged and can be easily removed.



E3D.2019

### E3D.2019

## Human Brain with Ateries

Life-Size This model is an exact life-size model and shows all parts in great detail. It is hand assembled to ensure intricate detailing and durability. The main parts are hinged and can be easily removed.



E3D.2016

### E3D.2016

## Median and Frontal Section of the Head

Life-Size This model is an exact life-size model and shows all parts in great detail. It is hand assembled to ensure intricate detailing and durability. The main parts are hinged and can be easily removed.



E3D.2017

### E3D.2017

## Half Head with Musculature Blood Vessels Nerves

Life-Size This model is an exact life-size model and shows all parts in great detail. It is hand assembled to ensure intricate detailing and durability. The main parts are hinged and can be easily removed.



E3D.2014

### E3D.2014

## Deep Muscles Blood Vessels and Nerves

Life-Size This model is an exact life-size model and shows all parts in great detail. It is hand assembled to ensure intricate detailing and durability. The main parts are hinged and can be easily removed.



E3D.2015

### E3D.2015

## Deep Muscles Blood Vessels and Nerves

Life-Size This model is an exact life-size model and shows all parts in great detail. It is hand assembled to ensure intricate detailing and durability. The main parts are hinged and can be easily removed.



E3D.2013

### E3D.2013

## muscles blood vessele and Nerves

Life-Size This model is an exact life-size model and shows all parts in great detail. It is hand assembled to ensure intricate detailing and durability. The main parts are hinged and can be easily removed.



E3D.2010

### E3D.2010

## Cranial Cavity Head Neck and Thorax

Life-Size This model is an exact life-size model and shows all parts in great detail. It is hand assembled to ensure intricate detailing and durability. The main parts are hinged and can be easily removed.





E3D.2011

### E3D.2011

## Medial muscles Blood Vessels and Nerves

Life-Size This model is an exact life-size model and shows all parts in great detail. It is hand assembled to ensure intricate detailing and durability. The main parts are hinged and can be easily removed.



E3D.2012

### E3D.2012

## Human Head

Life-Size This model is an exact life-size model and shows all parts in great detail. It is hand assembled to ensure intricate detailing and durability. The main parts are hinged and can be easily removed.



E3D.2008

### E3D.2008

## Human Head

Life-Size This model is an exact life-size model and shows all parts in great detail. It is hand assembled to ensure intricate detailing and durability. The main parts are hinged and can be easily removed.



E3D.2009

### E3D.2009

## The Model of Veins of the Head neck and Thoracic

Life-Size This model is an exact life-size model and shows all parts in great detail. It is hand assembled to ensure intricate detailing and durability. The main parts are hinged and can be easily removed.



E3D.2007

### E3D.2007

## Sub Mandibular Triangle Model

Life-Size This model is an exact life-size model and shows all parts in great detail. It is hand assembled to ensure intricate detailing and durability. The main parts are hinged and can be easily removed.



E3D.2006

### E3D.2006

## The Sponge Sinus Model of Human Face

Life-Size This model is an exact life-size model and shows all parts in great detail. It is hand assembled to ensure intricate detailing and durability. The main parts are hinged and can be easily removed.



E3D.2004

### E3D.2004

## The Deep Model of Human Face

Life-Size This model is an exact life-size model and shows all parts in great detail. It is hand assembled to ensure intricate detailing and durability. The main parts are hinged and can be easily removed.



E3D.2005

### E3D.2005

## The Trigeminal Nerve Model of Human Face

Life-Size This model is an exact life-size model and shows all parts in great detail. It is hand assembled to ensure intricate detailing and durability. The main parts are hinged and can be easily removed.



E3D.2003

### E3D.2003

## Media Section of the Head

Life-Size This model is an exact life-size model and shows all parts in great detail. It is hand assembled to ensure intricate detailing and durability. The main parts are hinged and can be easily removed.



E3D.2001

### E3D.2001

## Model of Human Brain

Life-Size This model is an exact life-size model and shows all parts in great detail. It is hand assembled to ensure intricate detailing and durability. The main parts are hinged and can be easily removed.



E3D.2002

### E3D.2002

## Human Head Model

Life-Size This model is an exact life-size model and shows all parts in great detail. It is hand assembled to ensure intricate detailing and durability. The main parts are hinged and can be easily removed.



E3C.2057

### E3C.2057

## Giant Femur Bone

Life-Size This model is an exact life-size model and shows all parts in great detail. It is hand assembled to ensure intricate detailing and durability. The main parts are hinged and can be easily removed.



E3C.2058

### E3C.2058

## Femur Bone

Life-Size This model is an exact life-size model and shows all parts in great detail. It is hand assembled to ensure intricate detailing and durability. The main parts are hinged and can be easily removed.



### E3C.2056

## Vertebrae Representation Model with Plastic Base

Life-Size This model is an exact life-size model and shows all parts in great detail. It is hand assembled to ensure intricate detailing and durability. The main parts are hinged and can be easily removed.



E3C.2054

### E3C.2054

## Big Lumbar set Disease Discs

Life-Size This model is an exact life-size model and shows all parts in great detail. It is hand assembled to ensure intricate detailing and durability. The main parts are hinged and can be easily removed.



E3C.2055

### E3C.2055

## Big Knee set rupture

Life-Size This model is an exact life-size model and shows all parts in great detail. It is hand assembled to ensure intricate detailing and durability. The main parts are hinged and can be easily removed.





E3C.2052

### E3C.2052

## Lumbar spinal column

Life-Size This model is an exact life-size model and shows all parts in great detail. It is hand assembled to ensure intricate detailing and durability. The main parts are hinged and can be easily removed.



E3C.2053

### E3C.2053

## Big Knee set

Life-Size This model is an exact life-size model and shows all parts in great detail. It is hand assembled to ensure intricate detailing and durability. The main parts are hinged and can be easily removed.



E3C.2051

### E3C.2051

## 4-Stage Degenerative Lumbar Set

Life-Size This model is an exact life-size model and shows all parts in great detail. It is hand assembled to ensure intricate detailing and durability. The main parts are hinged and can be easily removed.



E3C.2049

### E3C.2049

## Human Cervical Spinal Column

Life-Size This model is an exact life-size model and shows all parts in great detail. It is hand assembled to ensure intricate detailing and durability. The main parts are hinged and can be easily removed.



E3C.2050

### E3C.2050

## Human Thoracic Spinal Column

Life-Size This model is an exact life-size model and shows all parts in great detail. It is hand assembled to ensure intricate detailing and durability. The main parts are hinged and can be easily removed.



E3C.2047

### E3C.2047

## Human Vertebral Column and Pelvis

Life-Size This model is an exact life-size model and shows all parts in great detail. It is hand assembled to ensure intricate detailing and durability. The main parts are hinged and can be easily removed.



**E3C.2048**

## Human Vertebral Column with Skull

Life-Size This model is an exact life-size model and shows all parts in great detail. It is hand assembled to ensure intricate detailing and durability. The main parts are hinged and can be easily removed.



**E3C.2046**

## Human Vertebral Column and Pelvis

Life-Size This model is an exact life-size model and shows all parts in great detail. It is hand assembled to ensure intricate detailing and durability. The main parts are hinged and can be easily removed.



**E3C.2045**

## Human Vertebral Column and Pelvis

Life-Size This model is an exact life-size model and shows all parts in great detail. It is hand assembled to ensure intricate detailing and durability. The main parts are hinged and can be easily removed.



**E3C.2044**

## Human Vertebral Column and Pelvis

Life-Size This model is an exact life-size model and shows all parts in great detail. It is hand assembled to ensure intricate detailing and durability. The main parts are hinged and can be easily removed.



### E3C.2043

## Skull model of 8 kinds human race.

Life-Size This model is an exact life-size model and shows all parts in great detail. It is hand assembled to ensure intricate detailing and durability. The main parts are hinged and can be easily removed.



### E3C.2041

## Model Human Skull

Life-Size This model is an exact life-size model and shows all parts in great detail. It is hand assembled to ensure intricate detailing and durability. The main parts are hinged and can be easily removed.



**E3C.2042**

## Model of Skull Bones

Life-Size This model is an exact life-size model and shows all parts in great detail. It is hand assembled to ensure intricate detailing and durability. The main parts are hinged and can be easily removed.



**E3C.2040**

## Human Skull

Life-Size This model is an exact life-size model and shows all parts in great detail. It is hand assembled to ensure intricate detailing and durability. The main parts are hinged and can be easily removed.



### E3C.2038

## Didactic skull on cervical spinal column

Life-Size This model is an exact life-size model and shows all parts in great detail. It is hand assembled to ensure intricate detailing and durability. The main parts are hinged and can be easily removed.



### E3C.2039

## Human Skull

Life-Size This model is an exact life-size model and shows all parts in great detail. It is hand assembled to ensure intricate detailing and durability. The main parts are hinged and can be easily removed.





**E3C.2036**

## Big Adult Leg Bone

Life-Size This model is an exact life-size model and shows all parts in great detail. It is hand assembled to ensure intricate detailing and durability. The main parts are hinged and can be easily removed.



**E3C.2037**

## Model of adult skull

Life-Size This model is an exact life-size model and shows all parts in great detail. It is hand assembled to ensure intricate detailing and durability. The main parts are hinged and can be easily removed.



**E3C.2035**

## Female Pelvis

Life-Size This model is an exact life-size model and shows all parts in great detail. It is hand assembled to ensure intricate detailing and durability. The main parts are hinged and can be easily removed.



**E3C.2033**

## Human Male Pelvis

Life-Size This model is an exact life-size model and shows all parts in great detail. It is hand assembled to ensure intricate detailing and durability. The main parts are hinged and can be easily removed.



**E3C.2034**

## Male Pelvis

Life-Size This model is an exact life-size model and shows all parts in great detail. It is hand assembled to ensure intricate detailing and durability. The main parts are hinged and can be easily removed.



**E3C.2031**

## Shoulder joint-functional Model

Life-Size This model is an exact life-size model and shows all parts in great detail. It is hand assembled to ensure intricate detailing and durability. The main parts are hinged and can be easily removed.



**E3C.2032**

## West-desk Type Health Muscle Shoulder Model

Life-Size This model is an exact life-size model and shows all parts in great detail. It is hand assembled to ensure intricate detailing and durability. The main parts are hinged and can be easily removed.



**E3C.2029**

## Big Adult Shoulder Joint/muscle Ligament Painted

Life-Size This model is an exact life-size model and shows all parts in great detail. It is hand assembled to ensure intricate detailing and durability. The main parts are hinged and can be easily removed.



### **E3C.2030**

## Big Shoulder Joint-functional model

Life-Size This model is an exact life-size model and shows all parts in great detail. It is hand assembled to ensure intricate detailing and durability. The main parts are hinged and can be easily removed.



### **E3C.2027**

## Human Muscled Hip Joint Model

Life-Size This model is an exact life-size model and shows all parts in great detail. It is hand assembled to ensure intricate detailing and durability. The main parts are hinged and can be easily removed.



**E3C.2028**

## Human Hip Joint

Life-Size This model is an exact life-size model and shows all parts in great detail. It is hand assembled to ensure intricate detailing and durability. The main parts are hinged and can be easily removed.



**E3C.2026**

## Big Adult Hip Joint

Life-Size This model is an exact life-size model and shows all parts in great detail. It is hand assembled to ensure intricate detailing and durability. The main parts are hinged and can be easily removed.



**E3C.2025**

## Human Hip Joint

Life-Size This model is an exact life-size model and shows all parts in great detail. It is hand assembled to ensure intricate detailing and durability. The main parts are hinged and can be easily removed.



**E3C.2023**

## Human Knee Joint

Life-Size This model is an exact life-size model and shows all parts in great detail. It is hand assembled to ensure intricate detailing and durability. The main parts are hinged and can be easily removed.



**E3C.2024**

## Human Knee Joint

Life-Size This model is an exact life-size model and shows all parts in great detail. It is hand assembled to ensure intricate detailing and durability. The main parts are hinged and can be easily removed.



**E3C.2021**

## Human Elbow Joint

Life-Size This model is an exact life-size model and shows all parts in great detail. It is hand assembled to ensure intricate detailing and durability. The main parts are hinged and can be easily removed.





**E3C.2022**

## Human Knee Joint

Life-Size This model is an exact life-size model and shows all parts in great detail. It is hand assembled to ensure intricate detailing and durability. The main parts are hinged and can be easily removed.



**E3C.2019**

## Big Adult Arm Bone

Life-Size This model is an exact life-size model and shows all parts in great detail. It is hand assembled to ensure intricate detailing and durability. The main parts are hinged and can be easily removed.



**E3C.2020**

## Human Elbow Joint

Life-Size This model is an exact life-size model and shows all parts in great detail. It is hand assembled to ensure intricate detailing and durability. The main parts are hinged and can be easily removed.



**E3C.2017**

## Human Functional Elbow Joint

Life-Size This model is an exact life-size model and shows all parts in great detail. It is hand assembled to ensure intricate detailing and durability. The main parts are hinged and can be easily removed.



**E3C.2018**

## Human Upper Arm with Blood Vessels

Life-Size This model is an exact life-size model and shows all parts in great detail. It is hand assembled to ensure intricate detailing and durability. The main parts are hinged and can be easily removed.



**E3C.2016**

## Mode of transparent Human

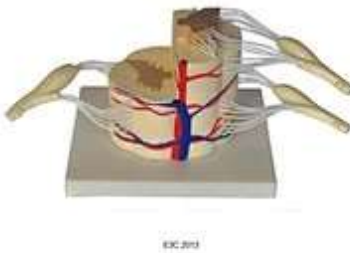
Life-Size This model is an exact life-size model and shows all parts in great detail. It is hand assembled to ensure intricate detailing and durability. The main parts are hinged and can be easily removed.



### E3C.2015

## Mode of transparent Human

Life-Size This model is an exact life-size model and shows all parts in great detail. It is hand assembled to ensure intricate detailing and durability. The main parts are hinged and can be easily removed.



### E3C.2013

## Vertebral and Partial Spinal Cord

Life-Size This model is an exact life-size model and shows all parts in great detail. It is hand assembled to ensure intricate detailing and durability. The main parts are hinged and can be easily removed.



**E3C.2014**

## Vertebral and Partial Spinal Cord

Life-Size This model is an exact life-size model and shows all parts in great detail. It is hand assembled to ensure intricate detailing and durability. The main parts are hinged and can be easily removed.



**E3C.2011**

## Mini -Skeleton 18cm

Life-Size This model is an exact life-size model and shows all parts in great detail. It is hand assembled to ensure intricate detailing and durability. The main parts are hinged and can be easily removed.



**E3C.2012**

## Vertebral and Partial Spinal Cord

Life-Size This model is an exact life-size model and shows all parts in great detail. It is hand assembled to ensure intricate detailing and durability. The main parts are hinged and can be easily removed.



**E3C.2009**

## Mini -Skeleton 42cm

Life-Size This model is an exact life-size model and shows all parts in great detail. It is hand assembled to ensure intricate detailing and durability. The main parts are hinged and can be easily removed.



### **E3C.2010**

## Mini -Skeleton 18cm

Life-Size This model is an exact life-size model and shows all parts in great detail. It is hand assembled to ensure intricate detailing and durability. The main parts are hinged and can be easily removed.



### **E3C.2007**

## Human Skeleton 85cm

Life-Size This model is an exact life-size model and shows all parts in great detail. It is hand assembled to ensure intricate detailing and durability. The main parts are hinged and can be easily removed.



**E3C.2008**

## Mini -Skeleton 42cm

Life-Size This model is an exact life-size model and shows all parts in great detail. It is hand assembled to ensure intricate detailing and durability. The main parts are hinged and can be easily removed.



**E3C.2006**

## Human Skeleton 85cm

Life-Size This model is an exact life-size model and shows all parts in great detail. It is hand assembled to ensure intricate detailing and durability. The main parts are hinged and can be easily removed.





### **E3C.2005**

## Human Skeleton 85cm

Life-Size This model is an exact life-size model and shows all parts in great detail. It is hand assembled to ensure intricate detailing and durability. The main parts are hinged and can be easily removed.



### **E3C.2003**

## Human Skeleton 85cm

Life-Size This model is an exact life-size model and shows all parts in great detail. It is hand assembled to ensure intricate detailing and durability. The main parts are hinged and can be easily removed.



**E3C.2004**

## Human Skeleton 85cm

Life-Size This model is an exact life-size model and shows all parts in great detail. It is hand assembled to ensure intricate detailing and durability. The main parts are hinged and can be easily removed.



**E3C.2001**

## Human Skeleton 170cm

Life-Size This model is an exact life-size model and shows all parts in great detail. It is hand assembled to ensure intricate detailing and durability. The main parts are hinged and can be easily removed.



### E3C.2002

## Human Skeleton 170cm

Life-Size This model is an exact life-size model and shows all parts in great detail. It is hand assembled to ensure intricate detailing and durability. The main parts are hinged and can be easily removed.



### E3B.2004

## Mini Human Muscular

Life-Size This model is an exact life-size model and shows all parts in great detail. It is hand assembled to ensure intricate detailing and durability. The main parts are hinged and can be easily removed.



### **E3B.2005**

## Model of Human muscel

Life-Size This model is an exact life-size model and shows all parts in great detail. It is hand assembled to ensure intricate detailing and durability. The main parts are hinged and can be easily removed.



### **E3B.2003**

## 85cm tall Muscular Body Model

Life-Size This model is an exact life-size model and shows all parts in great detail. It is hand assembled to ensure intricate detailing and durability. The main parts are hinged and can be easily removed.



### E3B.2001

## Human Male Acupuncture.

Life-Size This model is an exact life-size model and shows all parts in great detail. It is hand assembled to ensure intricate detailing and durability. The main parts are hinged and can be easily removed.



### E3B.2002

## Human Male Muscular

Life-Size This model is an exact life-size model and shows all parts in great detail. It is hand assembled to ensure intricate detailing and durability. The main parts are hinged and can be easily removed.



### E3A.2031

## Skeleton Model of Human Foot

Life-Size This model is an exact life-size model and shows all parts in great detail. It is hand assembled to ensure intricate detailing and durability. The main parts are hinged and can be easily removed.



### E3A.2032

## Foot Set

Life-Size This model is an exact life-size model and shows all parts in great detail. It is hand assembled to ensure intricate detailing and durability. The main parts are hinged and can be easily removed.



### E3A.2029

## Foot Set

Life-Size This model is an exact life-size model and shows all parts in great detail. It is hand assembled to ensure intricate detailing and durability. The main parts are hinged and can be easily removed.



### E3A.2030

## Foot Set

Life-Size This model is an exact life-size model and shows all parts in great detail. It is hand assembled to ensure intricate detailing and durability. The main parts are hinged and can be easily removed.



### E3A.2028

## Skeleton Model of Human Hand

Life-Size This model is an exact life-size model and shows all parts in great detail. It is hand assembled to ensure intricate detailing and durability. The main parts are hinged and can be easily removed.



### E3A.2026

## Anat Model of Palm

Life-Size This model is an exact life-size model and shows all parts in great detail. It is hand assembled to ensure intricate detailing and durability. The main parts are hinged and can be easily removed.





### E3A.2027

## Model of human hand

Life-Size This model is an exact life-size model and shows all parts in great detail. It is hand assembled to ensure intricate detailing and durability. The main parts are hinged and can be easily removed.



### E3A.2024

## Model of Human Torso(Mini Size)

Life-Size This model is an exact life-size model and shows all parts in great detail. It is hand assembled to ensure intricate detailing and durability. The main parts are hinged and can be easily removed.



### E3A.2025

## 85cm Female Torso

Life-Size This model is an exact life-size model and shows all parts in great detail. It is hand assembled to ensure intricate detailing and durability. The main parts are hinged and can be easily removed.



### E3A.2023

## 95cm Human Torso without Head

Life-Size This model is an exact life-size model and shows all parts in great detail. It is hand assembled to ensure intricate detailing and durability. The main parts are hinged and can be easily removed.



### E3A.2022

## 95cm Human Torso

Life-Size This model is an exact life-size model and shows all parts in great detail. It is hand assembled to ensure intricate detailing and durability. The main parts are hinged and can be easily removed.



### E3A.2020

## 45cm Male torso

Life-Size This model is an exact life-size model and shows all parts in great detail. It is hand assembled to ensure intricate detailing and durability. The main parts are hinged and can be easily removed.



### E3A.2021

## Female torso

Life-Size This model is an exact life-size model and shows all parts in great detail. It is hand assembled to ensure intricate detailing and durability. The main parts are hinged and can be easily removed.



### E3A.2018

## 85cm Human Torso 44parts

Life-Size This model is an exact life-size model and shows all parts in great detail. It is hand assembled to ensure intricate detailing and durability. The main parts are hinged and can be easily removed.



### E3A.2019

## 42cm Human Torso

Life-Size This model is an exact life-size model and shows all parts in great detail. It is hand assembled to ensure intricate detailing and durability. The main parts are hinged and can be easily removed.



### E3A.2017

## 85cm Human Torso

Life-Size This model is an exact life-size model and shows all parts in great detail. It is hand assembled to ensure intricate detailing and durability. The main parts are hinged and can be easily removed.



**E3A.2015**

## Miniature Human Male Torso

Life-Size This model is an exact life-size model and shows all parts in great detail. It is hand assembled to ensure intricate detailing and durability. The main parts are hinged and can be easily removed.



**E3A.2016**

## Miniature Human Male Torso

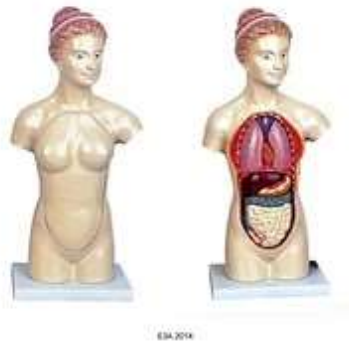
Life-Size This model is an exact life-size model and shows all parts in great detail. It is hand assembled to ensure intricate detailing and durability. The main parts are hinged and can be easily removed.



### E3A.2013

## 45cm Male torso

Life-Size This model is an exact life-size model and shows all parts in great detail. It is hand assembled to ensure intricate detailing and durability. The main parts are hinged and can be easily removed.



### E3A.2014

## 45cm Female torso

Life-Size This model is an exact life-size model and shows all parts in great detail. It is hand assembled to ensure intricate detailing and durability. The main parts are hinged and can be easily removed.



**E3A.2012**

## Miniature Human Male Torso

Life-Size This model is an exact life-size model and shows all parts in great detail. It is hand assembled to ensure intricate detailing and durability. The main parts are hinged and can be easily removed.



**E3A.2009**

## Human Unisex Torso

Life-Size This model is an exact life-size model and shows all parts in great detail. It is hand assembled to ensure intricate detailing and durability. The main parts are hinged and can be easily removed.





### E3A.2010

## Human Unisex Torso

Life-Size This model is an exact life-size model and shows all parts in great detail. It is hand assembled to ensure intricate detailing and durability. The main parts are hinged and can be easily removed.



### E3A.2011

## 85cm Human Unisex Torso

Life-Size This model is an exact life-size model and shows all parts in great detail. It is hand assembled to ensure intricate detailing and durability. The main parts are hinged and can be easily removed.



### E3A.2008

## Human Torso

Life-Size This model is an exact life-size model and shows all parts in great detail. It is hand assembled to ensure intricate detailing and durability. The main parts are hinged and can be easily removed.



### E3A.2005

## Human male and female Torso

Life-Size This model is an exact life-size model and shows all parts in great detail. It is hand assembled to ensure intricate detailing and durability. The main parts are hinged and can be easily removed.



### E3A.2003

## Human Torso

Life-Size This model is an exact life-size model and shows all parts in great detail. It is hand assembled to ensure intricate detailing and durability. The main parts are hinged and can be easily removed.



### E3A.2004

## Human Torso

Life-Size This model is an exact life-size model and shows all parts in great detail. It is hand assembled to ensure intricate detailing and durability. The main parts are hinged and can be easily removed.



### E3A.2002

## Human Sexless Torso

Life-Size This model is an exact life-size model and shows all parts in great detail. It is hand assembled to ensure intricate detailing and durability. The main parts are hinged and can be easily removed.



### E3A.2001

## Human Torso

Life-Size This model is an exact life-size model and shows all parts in great detail. It is hand assembled to ensure intricate detailing and durability. The main parts are hinged and can be easily removed.



### E3M.1933

## Disease Ear Mode

Life-Size This model is an exact life-size model and shows all parts in great detail. It is hand assembled to ensure intricate detailing and durability. The main parts are hinged and can be easily removed.



### E3M.1931

## Disease Skin 3D

Life-Size This model is an exact life-size model and shows all parts in great detail. It is hand assembled to ensure intricate detailing and durability. The main parts are hinged and can be easily removed.



**E3M.1932**

## Burned Skin Model

Life-Size This model is an exact life-size model and shows all parts in great detail. It is hand assembled to ensure intricate detailing and durability. The main parts are hinged and can be easily removed.



**E3M.1930**

## Prostate Disease Model

Life-Size This model is an exact life-size model and shows all parts in great detail. It is hand assembled to ensure intricate detailing and durability. The main parts are hinged and can be easily removed.



**E3M.1929**

## Diseased Breast Model

Life-Size This model is an exact life-size model and shows all parts in great detail. It is hand assembled to ensure intricate detailing and durability. The main parts are hinged and can be easily removed.



**E3M.1927**

## Female Genital Organ of Model

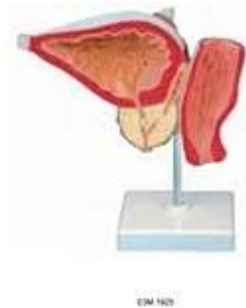
Life-Size This model is an exact life-size model and shows all parts in great detail. It is hand assembled to ensure intricate detailing and durability. The main parts are hinged and can be easily removed.



### E3M.1928

## Male Genital Organ of Model

Life-Size This model is an exact life-size model and shows all parts in great detail. It is hand assembled to ensure intricate detailing and durability. The main parts are hinged and can be easily removed.



### E3M.1925

## Prostatic Csarcinoma Model

Life-Size This model is an exact life-size model and shows all parts in great detail. It is hand assembled to ensure intricate detailing and durability. The main parts are hinged and can be easily removed.





**E3M.1926**

## Prostate, Prostatic Hyperplasia

Life-Size This model is an exact life-size model and shows all parts in great detail. It is hand assembled to ensure intricate detailing and durability. The main parts are hinged and can be easily removed.



**E3M.1924**

## Prostatic Hyperplasia Model

Life-Size This model is an exact life-size model and shows all parts in great detail. It is hand assembled to ensure intricate detailing and durability. The main parts are hinged and can be easily removed.



### E3M.1921

## Renal Calculus Model

Life-Size This model is an exact life-size model and shows all parts in great detail. It is hand assembled to ensure intricate detailing and durability. The main parts are hinged and can be easily removed.



### E3M.1922

## Albuminuria

Life-Size This model is an exact life-size model and shows all parts in great detail. It is hand assembled to ensure intricate detailing and durability. The main parts are hinged and can be easily removed.



### E3M.1923

## Cerebral Apoplexy

Life-Size This model is an exact life-size model and shows all parts in great detail. It is hand assembled to ensure intricate detailing and durability. The main parts are hinged and can be easily removed.



### E3M.1920

## Disease nose and larynx Model(2 kinds disease)

Life-Size This model is an exact life-size model and shows all parts in great detail. It is hand assembled to ensure intricate detailing and durability. The main parts are hinged and can be easily removed.



### **E3M.1917**

## Disease Stomach II

Life-Size This model is an exact life-size model and shows all parts in great detail. It is hand assembled to ensure intricate detailing and durability. The main parts are hinged and can be easily removed.



### **E3M.1918**

## Degeneration of Colon

Life-Size This model is an exact life-size model and shows all parts in great detail. It is hand assembled to ensure intricate detailing and durability. The main parts are hinged and can be easily removed.



### **E3M.1915**

## Diseased Liver Model

Life-Size This model is an exact life-size model and shows all parts in great detail. It is hand assembled to ensure intricate detailing and durability. The main parts are hinged and can be easily removed.



### **E3M.1916**

## Pancrease/gallbladder/spleen

Life-Size This model is an exact life-size model and shows all parts in great detail. It is hand assembled to ensure intricate detailing and durability. The main parts are hinged and can be easily removed.



**E3M.1913**

## Diseased Esophagus Model

Life-Size This model is an exact life-size model and shows all parts in great detail. It is hand assembled to ensure intricate detailing and durability. The main parts are hinged and can be easily removed.



**E3M.1914**

## Diseased Rectum Model

Life-Size This model is an exact life-size model and shows all parts in great detail. It is hand assembled to ensure intricate detailing and durability. The main parts are hinged and can be easily removed.



### **E3M.1911**

## Diabetes Model,5 parts

Life-Size This model is an exact life-size model and shows all parts in great detail. It is hand assembled to ensure intricate detailing and durability. The main parts are hinged and can be easily removed.



### **E3M.1912**

## Heart Pass, Natural Size, 2 Parts

Life-Size This model is an exact life-size model and shows all parts in great detail. It is hand assembled to ensure intricate detailing and durability. The main parts are hinged and can be easily removed.



### E3M.1910

## Hypertension Model II,5 parts

Life-Size This model is an exact life-size model and shows all parts in great detail. It is hand assembled to ensure intricate detailing and durability. The main parts are hinged and can be easily removed.



### E3M.1905

## Knee Joints Synthesis Model

Life-Size This model is an exact life-size model and shows all parts in great detail. It is hand assembled to ensure intricate detailing and durability. The main parts are hinged and can be easily removed.





### E3M.1903

## Advanced Osteoporosis Model

Life-Size This model is an exact life-size model and shows all parts in great detail. It is hand assembled to ensure intricate detailing and durability. The main parts are hinged and can be easily removed.



### E3M.1904

## GrindingTeeth Disease Model

Life-Size This model is an exact life-size model and shows all parts in great detail. It is hand assembled to ensure intricate detailing and durability. The main parts are hinged and can be easily removed.



### E3M.1901

## Decayed Tooth

Life-Size This model is an exact life-size model and shows all parts in great detail. It is hand assembled to ensure intricate detailing and durability. The main parts are hinged and can be easily removed.



### E3M.1902

## Diseased Tooth

Life-Size This model is an exact life-size model and shows all parts in great detail. It is hand assembled to ensure intricate detailing and durability. The main parts are hinged and can be easily removed.



**E3L.1907**

## Model of Skin

Life-Size This model is an exact life-size model and shows all parts in great detail. It is hand assembled to ensure intricate detailing and durability. The main parts are hinged and can be easily removed.



**E3L.1902**

## The Abdominal Cavity Traverses

Life-Size This model is an exact life-size model and shows all parts in great detail. It is hand assembled to ensure intricate detailing and durability. The main parts are hinged and can be easily removed.



**E3L.1903**

## Section Model of Thoracic Region

Life-Size This model is an exact life-size model and shows all parts in great detail. It is hand assembled to ensure intricate detailing and durability. The main parts are hinged and can be easily removed.



**E3L.1901**

**E3L.1901**

## Male Perineum

Life-Size This model is an exact life-size model and shows all parts in great detail. It is hand assembled to ensure intricate detailing and durability. The main parts are hinged and can be easily removed.



**E3K.1906**

## Teeth Care Model

Life-Size This model is an exact life-size model and shows all parts in great detail. It is hand assembled to ensure intricate detailing and durability. The main parts are hinged and can be easily removed.



E3K.1905

**E3K.1905**

## Incisor, Canine Tooth and Molar

Life-Size This model is an exact life-size model and shows all parts in great detail. It is hand assembled to ensure intricate detailing and durability. The main parts are hinged and can be easily removed.



**E3K.1903**

## Deciduous Teeth Model

Life-Size This model is an exact life-size model and shows all parts in great detail. It is hand assembled to ensure intricate detailing and durability. The main parts are hinged and can be easily removed.



**E3K.1904**

## 3 Times Enlarged Lower Jaw Model

Life-Size This model is an exact life-size model and shows all parts in great detail. It is hand assembled to ensure intricate detailing and durability. The main parts are hinged and can be easily removed.



### E3K.1902

## Permanent Teeth,Nature Size,2 Parts

Life-Size This model is an exact life-size model and shows all parts in great detail. It is hand assembled to ensure intricate detailing and durability. The main parts are hinged and can be easily removed.



### E3K.1901

## Primary Teeth/deciduous teeth, enlarged,1part

Life-Size This model is an exact life-size model and shows all parts in great detail. It is hand assembled to ensure intricate detailing and durability. The main parts are hinged and can be easily removed.



**E3J.1905**

## Spiral Organ

Life-Size This model is an exact life-size model and shows all parts in great detail. It is hand assembled to ensure intricate detailing and durability. The main parts are hinged and can be easily removed.



**E3J.1906**

## Model Of Inner Ear

Life-Size This model is an exact life-size model and shows all parts in great detail. It is hand assembled to ensure intricate detailing and durability. The main parts are hinged and can be easily removed.





**E3J.1904**

## Labyrinth

Life-Size This model is an exact life-size model and shows all parts in great detail. It is hand assembled to ensure intricate detailing and durability. The main parts are hinged and can be easily removed.



**E3J.1903**

## Auditory Ossicles (Malleus Incus Stapes)

Life-Size This model is an exact life-size model and shows all parts in great detail. It is hand assembled to ensure intricate detailing and durability. The main parts are hinged and can be easily removed.



### **E3J.1901**

## Ear,3 parts

Life-Size This model is an exact life-size model and shows all parts in great detail. It is hand assembled to ensure intricate detailing and durability. The main parts are hinged and can be easily removed.



### **E3J.1902**

## Ear,5 parts

Life-Size This model is an exact life-size model and shows all parts in great detail. It is hand assembled to ensure intricate detailing and durability. The main parts are hinged and can be easily removed.



### **E31.1906**

## Eye, 3 Times, 5 Parts

Life-Size This model is an exact life-size model and shows all parts in great detail. It is hand assembled to ensure intricate detailing and durability. The main parts are hinged and can be easily removed.



### **E31.1905**

## Enlarged Half Eye Ball

Life-Size This model is an exact life-size model and shows all parts in great detail. It is hand assembled to ensure intricate detailing and durability. The main parts are hinged and can be easily removed.



### **E31.1903**

## Giant Eye In Orbit II

Life-Size This model is an exact life-size model and shows all parts in great detail. It is hand assembled to ensure intricate detailing and durability. The main parts are hinged and can be easily removed.



### **E31.1904**

## Eyeball Structure

Life-Size This model is an exact life-size model and shows all parts in great detail. It is hand assembled to ensure intricate detailing and durability. The main parts are hinged and can be easily removed.



### E3I.1901

## Eye,6 parts

Life-Size This model is an exact life-size model and shows all parts in great detail. It is hand assembled to ensure intricate detailing and durability. The main parts are hinged and can be easily removed.



### E3I.1902

## Giant Eye In Orbit I

Life-Size This model is an exact life-size model and shows all parts in great detail. It is hand assembled to ensure intricate detailing and durability. The main parts are hinged and can be easily removed.



### E3H.1934

## Human Development Set

Life-Size This model is an exact life-size model and shows all parts in great detail. It is hand assembled to ensure intricate detailing and durability. The main parts are hinged and can be easily removed.



### E3H.1933

## Kidney, Renal Nephron , Renal Corpuscle

Life-Size This model is an exact life-size model and shows all parts in great detail. It is hand assembled to ensure intricate detailing and durability. The main parts are hinged and can be easily removed.



**E3H.1931**

## Renal Nephron

Life-Size This model is an exact life-size model and shows all parts in great detail. It is hand assembled to ensure intricate detailing and durability. The main parts are hinged and can be easily removed.



**E3H.1932**

## Renal Corpuscle

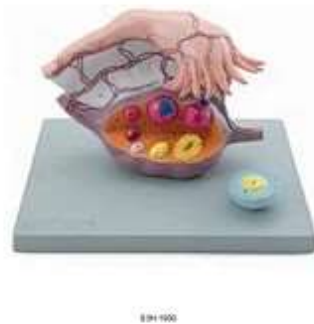
Life-Size This model is an exact life-size model and shows all parts in great detail. It is hand assembled to ensure intricate detailing and durability. The main parts are hinged and can be easily removed.



**E3H.1929**

## Pelvic Floor Muscle Model of Female

Life-Size This model is an exact life-size model and shows all parts in great detail. It is hand assembled to ensure intricate detailing and durability. The main parts are hinged and can be easily removed.



**E3H.1930**

## Ovarium Model

Life-Size This model is an exact life-size model and shows all parts in great detail. It is hand assembled to ensure intricate detailing and durability. The main parts are hinged and can be easily removed.





### E3H.1928

## Human Development Set, 18 parts

Life-Size This model is an exact life-size model and shows all parts in great detail. It is hand assembled to ensure intricate detailing and durability. The main parts are hinged and can be easily removed.



### E3H.1926

## Human Development Set with Baby

Life-Size This model is an exact life-size model and shows all parts in great detail. It is hand assembled to ensure intricate detailing and durability. The main parts are hinged and can be easily removed.



**E3H.1927**

## Enlarged 4-week Embryo Model

Life-Size This model is an exact life-size model and shows all parts in great detail. It is hand assembled to ensure intricate detailing and durability. The main parts are hinged and can be easily removed.



**E3H.1925**

## Prostate Model

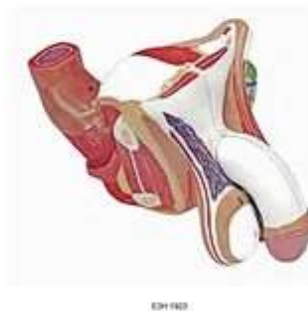
Life-Size This model is an exact life-size model and shows all parts in great detail. It is hand assembled to ensure intricate detailing and durability. The main parts are hinged and can be easily removed.



### E3H.1924

## Female Genital Organ,4 parts

Life-Size This model is an exact life-size model and shows all parts in great detail. It is hand assembled to ensure intricate detailing and durability. The main parts are hinged and can be easily removed.



### E3H.1923

## Male Genital Organ,4 parts

Life-Size This model is an exact life-size model and shows all parts in great detail. It is hand assembled to ensure intricate detailing and durability. The main parts are hinged and can be easily removed.



### E3H.1921

## Model Of Testis

Life-Size This model is an exact life-size model and shows all parts in great detail. It is hand assembled to ensure intricate detailing and durability. The main parts are hinged and can be easily removed.



### E3H.1922

## The Relationship Between Embryo Caul And Matrix

Life-Size This model is an exact life-size model and shows all parts in great detail. It is hand assembled to ensure intricate detailing and durability. The main parts are hinged and can be easily removed.



### **E3H.1920**

## Block Model Of Female Pelvis

Life-Size This model is an exact life-size model and shows all parts in great detail. It is hand assembled to ensure intricate detailing and durability. The main parts are hinged and can be easily removed.



### **E3H.1919**

## Female Internal Genital Organ

Life-Size This model is an exact life-size model and shows all parts in great detail. It is hand assembled to ensure intricate detailing and durability. The main parts are hinged and can be easily removed.



### **E3H.1918**

## Periodic Changes Of Female Hermone

Life-Size This model is an exact life-size model and shows all parts in great detail. It is hand assembled to ensure intricate detailing and durability. The main parts are hinged and can be easily removed.



### **E3H.1916**

## Female Pelvis, 3parts

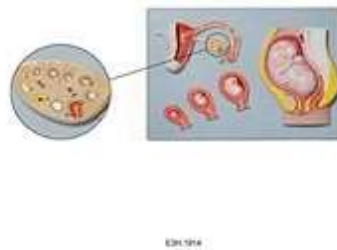
Life-Size This model is an exact life-size model and shows all parts in great detail. It is hand assembled to ensure intricate detailing and durability. The main parts are hinged and can be easily removed.



**E3H.1917**

## Male Pelvis, 4parts

Life-Size This model is an exact life-size model and shows all parts in great detail. It is hand assembled to ensure intricate detailing and durability. The main parts are hinged and can be easily removed.



**E3H.1914**

## Foetus Development Model (relief)

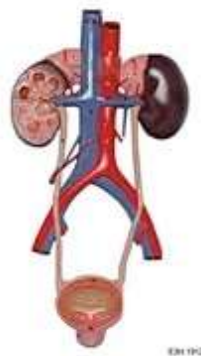
Life-Size This model is an exact life-size model and shows all parts in great detail. It is hand assembled to ensure intricate detailing and durability. The main parts are hinged and can be easily removed.



**E3H.1915**

## Spermiogenesis

Life-Size This model is an exact life-size model and shows all parts in great detail. It is hand assembled to ensure intricate detailing and durability. The main parts are hinged and can be easily removed.



**E3H.1912**

## Block Model of Urinary System

Life-Size This model is an exact life-size model and shows all parts in great detail. It is hand assembled to ensure intricate detailing and durability. The main parts are hinged and can be easily removed.





### E3H.1913

Kidney, 3 times enlarged, 2 parts

Life-Size This model is an exact life-size model and shows all parts in great detail. It is hand assembled to ensure intricate detailing and durability. The main parts are hinged and can be easily removed.



### E3H.1910

Urinary System(bladder could be open)

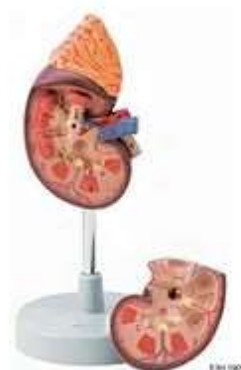
Life-Size This model is an exact life-size model and shows all parts in great detail. It is hand assembled to ensure intricate detailing and durability. The main parts are hinged and can be easily removed.



**E3H.1911**

## Kidney Section

Life-Size This model is an exact life-size model and shows all parts in great detail. It is hand assembled to ensure intricate detailing and durability. The main parts are hinged and can be easily removed.



**E3H.1909**

## 1.5 Times enlarged Kidney Model,2 parts

Life-Size This model is an exact life-size model and shows all parts in great detail. It is hand assembled to ensure intricate detailing and durability. The main parts are hinged and can be easily removed.



### **E3H.1905**

## **Deluxe Model of Kidney With Adrenal,1part**

Life-Size This model is an exact life-size model and shows all parts in great detail. It is hand assembled to ensure intricate detailing and durability. The main parts are hinged and can be easily removed.



### **E3H.1904**

## **Male Urinary Bladder with Prostate - 2 Parts**

Life-Size This model is an exact life-size model and shows all parts in great detail. It is hand assembled to ensure intricate detailing and durability. The main parts are hinged and can be easily removed.



### **E3H.1902**

## Enlarged Glomerulus, Nephron, Kidney

Life-Size This model is an exact life-size model and shows all parts in great detail. It is hand assembled to ensure intricate detailing and durability. The main parts are hinged and can be easily removed.



### **E3G.1912**

## Section Through Digestive Organ, 6parts

Life-Size This model is an exact life-size model and shows all parts in great detail. It is hand assembled to ensure intricate detailing and durability. The main parts are hinged and can be easily removed.



**E3H.1901**

## Median Section of Male and Femal Urinary Tracts

Life-Size This model is an exact life-size model and shows all parts in great detail. It is hand assembled to ensure intricate detailing and durability. The main parts are hinged and can be easily removed.



**E3G.1911**

## Liver 1.5 Times Enlarged

Life-Size This model is an exact life-size model and shows all parts in great detail. It is hand assembled to ensure intricate detailing and durability. The main parts are hinged and can be easily removed.



### **E3G.1910**

## Transparent Hepatic Segments

Life-Size This model is an exact life-size model and shows all parts in great detail. It is hand assembled to ensure intricate detailing and durability. The main parts are hinged and can be easily removed.



### **E3G.1909**

## Liver, Pancreas And Duodenum, 2 parts

Life-Size This model is an exact life-size model and shows all parts in great detail. It is hand assembled to ensure intricate detailing and durability. The main parts are hinged and can be easily removed.



### **E3G.1908**

## Caecum and Appendix

Life-Size This model is an exact life-size model and shows all parts in great detail. It is hand assembled to ensure intricate detailing and durability. The main parts are hinged and can be easily removed.



### **E3G.1906**

## Rectum and Anal Canal

Life-Size This model is an exact life-size model and shows all parts in great detail. It is hand assembled to ensure intricate detailing and durability. The main parts are hinged and can be easily removed.



### **E3G.1907**

## Pancreas, Duodenum and Spleen

Life-Size This model is an exact life-size model and shows all parts in great detail. It is hand assembled to ensure intricate detailing and durability. The main parts are hinged and can be easily removed.



### **E3G.1904**

## Liver Natural Size 1part

Life-Size This model is an exact life-size model and shows all parts in great detail. It is hand assembled to ensure intricate detailing and durability. The main parts are hinged and can be easily removed.

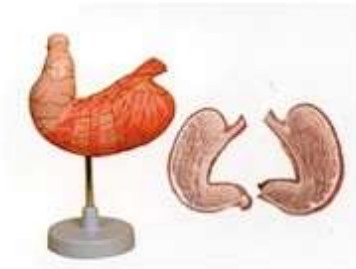




**E3G.1905**

## Dissection Model of Liver

Life-Size This model is an exact life-size model and shows all parts in great detail. It is hand assembled to ensure intricate detailing and durability. The main parts are hinged and can be easily removed.



**E3G.1902**

## Stomach Natural Size, 2parts

Life-Size This model is an exact life-size model and shows all parts in great detail. It is hand assembled to ensure intricate detailing and durability. The main parts are hinged and can be easily removed.



### **E3G.1903**

## Villus

Life-Size This model is an exact life-size model and shows all parts in great detail. It is hand assembled to ensure intricate detailing and durability. The main parts are hinged and can be easily removed.



### **E3G.1901**

## Villus

Life-Size This model is an exact life-size model and shows all parts in great detail. It is hand assembled to ensure intricate detailing and durability. The main parts are hinged and can be easily removed.



### **E3F.1906**

## Embryo Blood Circulation Model,3 parts

Life-Size This model is an exact life-size model and shows all parts in great detail. It is hand assembled to ensure intricate detailing and durability. The main parts are hinged and can be easily removed.



### **E3F.1907**

## 2 Times Enlarged Heart Model,4 parts

Life-Size This model is an exact life-size model and shows all parts in great detail. It is hand assembled to ensure intricate detailing and durability. The main parts are hinged and can be easily removed.



**E3F.1904**

## Circulatory System of Human

Life-Size This model is an exact life-size model and shows all parts in great detail. It is hand assembled to ensure intricate detailing and durability. The main parts are hinged and can be easily removed.



**E3F.1905**

## Conducting System of Heart

Life-Size This model is an exact life-size model and shows all parts in great detail. It is hand assembled to ensure intricate detailing and durability. The main parts are hinged and can be easily removed.



### **E3F.1901**

## Enlarged Heart Model,3 parts

Life-Size This model is an exact life-size model and shows all parts in great detail. It is hand assembled to ensure intricate detailing and durability. The main parts are hinged and can be easily removed.



E3F.1902

### **E3F.1902**

## All Types Of Blood Cell

Life-Size This model is an exact life-size model and shows all parts in great detail. It is hand assembled to ensure intricate detailing and durability. The main parts are hinged and can be easily removed.



E3E.1914

### **E3E.1914**

## Trachea Section

Life-Size This model is an exact life-size model and shows all parts in great detail. It is hand assembled to ensure intricate detailing and durability. The main parts are hinged and can be easily removed.



E3E.1913

### **E3E.1913**

## Human Larynx Model,2 parts

Life-Size This model is an exact life-size model and shows all parts in great detail. It is hand assembled to ensure intricate detailing and durability. The main parts are hinged and can be easily removed.



### E3E.1912

## Tongue Muscle, 1 part

Life-Size This model is an exact life-size model and shows all parts in great detail. It is hand assembled to ensure intricate detailing and durability. The main parts are hinged and can be easily removed.



### E3E.1911

## Pharynx Muscle Model

Life-Size This model is an exact life-size model and shows all parts in great detail. It is hand assembled to ensure intricate detailing and durability. The main parts are hinged and can be easily removed.



### E3E.1909

## Human Lungs, 1 part, natural size

Life-Size This model is an exact life-size model and shows all parts in great detail. It is hand assembled to ensure intricate detailing and durability. The main parts are hinged and can be easily removed.



### E3E.1910

## Human Respiratory System 7 parts

Life-Size This model is an exact life-size model and shows all parts in great detail. It is hand assembled to ensure intricate detailing and durability. The main parts are hinged and can be easily removed.





**E3E.1907**

## Trachea and Bronchus Model

Life-Size This model is an exact life-size model and shows all parts in great detail. It is hand assembled to ensure intricate detailing and durability. The main parts are hinged and can be easily removed.



**E3E.1908**

## 2 Times Enlarged Larynx, 5 parts

Life-Size This model is an exact life-size model and shows all parts in great detail. It is hand assembled to ensure intricate detailing and durability. The main parts are hinged and can be easily removed.



### E3E.1905

## 4times enlarged Laryngeal Cartilage,4 parts

Life-Size This model is an exact life-size model and shows all parts in great detail. It is hand assembled to ensure intricate detailing and durability. The main parts are hinged and can be easily removed.



### E3E.1906

## Segmental Brochial Tree

Life-Size This model is an exact life-size model and shows all parts in great detail. It is hand assembled to ensure intricate detailing and durability. The main parts are hinged and can be easily removed.



### **E3E.1903**

## Nasal Cavity 3 parts

Life-Size This model is an exact life-size model and shows all parts in great detail. It is hand assembled to ensure intricate detailing and durability. The main parts are hinged and can be easily removed.



### **E3E.1904**

## Left and Right Lung 2 parts

Life-Size This model is an exact life-size model and shows all parts in great detail. It is hand assembled to ensure intricate detailing and durability. The main parts are hinged and can be easily removed.



### E3E.1902

## Model Of Pulmonary Segment

Life-Size This model is an exact life-size model and shows all parts in great detail. It is hand assembled to ensure intricate detailing and durability. The main parts are hinged and can be easily removed.



### E3E.1901

## Nasal Cavity, Natural Size

Life-Size This model is an exact life-size model and shows all parts in great detail. It is hand assembled to ensure intricate detailing and durability. The main parts are hinged and can be easily removed.



**E3D.1931**

## Human Nervous System

Life-Size This model is an exact life-size model and shows all parts in great detail. It is hand assembled to ensure intricate detailing and durability. The main parts are hinged and can be easily removed.



**E3D.1929**

## Right Brain with Different Function Area

Life-Size This model is an exact life-size model and shows all parts in great detail. It is hand assembled to ensure intricate detailing and durability. The main parts are hinged and can be easily removed.



**E3D.1930**

## Right Brain Model

Life-Size This model is an exact life-size model and shows all parts in great detail. It is hand assembled to ensure intricate detailing and durability. The main parts are hinged and can be easily removed.



**E3D.1928**

## Fundus Nucleus Of Ventricle

Life-Size This model is an exact life-size model and shows all parts in great detail. It is hand assembled to ensure intricate detailing and durability. The main parts are hinged and can be easily removed.



**E3D.1925**

## Brainstem and Hypothalamus

Life-Size This model is an exact life-size model and shows all parts in great detail. It is hand assembled to ensure intricate detailing and durability. The main parts are hinged and can be easily removed.



**E3D.1927**

## Levels Anatomise Of Calvaria

Life-Size This model is an exact life-size model and shows all parts in great detail. It is hand assembled to ensure intricate detailing and durability. The main parts are hinged and can be easily removed.



### E3D.1926

## Human Brain, 2.5 times enlarged, 14 parts

Life-Size This model is an exact life-size model and shows all parts in great detail. It is hand assembled to ensure intricate detailing and durability. The main parts are hinged and can be easily removed.



### E3D.1923

## Capsula Interna and Basal Ganglion

Life-Size This model is an exact life-size model and shows all parts in great detail. It is hand assembled to ensure intricate detailing and durability. The main parts are hinged and can be easily removed.





**E3D.1924**

## Betweenbrain

Life-Size This model is an exact life-size model and shows all parts in great detail. It is hand assembled to ensure intricate detailing and durability. The main parts are hinged and can be easily removed.



**E3D.1921**

## Neck Nerve Model

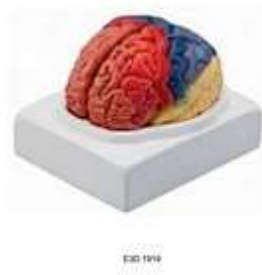
Life-Size This model is an exact life-size model and shows all parts in great detail. It is hand assembled to ensure intricate detailing and durability. The main parts are hinged and can be easily removed.



**E3D.1922**

## Fourth Ventricle

Life-Size This model is an exact life-size model and shows all parts in great detail. It is hand assembled to ensure intricate detailing and durability. The main parts are hinged and can be easily removed.



**E3D.1919**

## Brain With Different Functional Area

Life-Size This model is an exact life-size model and shows all parts in great detail. It is hand assembled to ensure intricate detailing and durability. The main parts are hinged and can be easily removed.



**E3D.1920**

## Cerebellum

Life-Size This model is an exact life-size model and shows all parts in great detail. It is hand assembled to ensure intricate detailing and durability. The main parts are hinged and can be easily removed.



**E3D.1918**

## 5th Cervicle Veterbrae

Life-Size This model is an exact life-size model and shows all parts in great detail. It is hand assembled to ensure intricate detailing and durability. The main parts are hinged and can be easily removed.



**E3D.1917**

## Sympathetic Nervous System

Life-Size This model is an exact life-size model and shows all parts in great detail. It is hand assembled to ensure intricate detailing and durability. The main parts are hinged and can be easily removed.



**E3D.1915**

## Reflect Arc (relief)

Life-Size This model is an exact life-size model and shows all parts in great detail. It is hand assembled to ensure intricate detailing and durability. The main parts are hinged and can be easily removed.



### E3D.1916

## Brain Nerves.2 parts

Life-Size This model is an exact life-size model and shows all parts in great detail. It is hand assembled to ensure intricate detailing and durability. The main parts are hinged and can be easily removed.



### E3D.1913

## Brian With Artery Distribution

Life-Size This model is an exact life-size model and shows all parts in great detail. It is hand assembled to ensure intricate detailing and durability. The main parts are hinged and can be easily removed.



**E3D.1914**

## Model Of vertebrae

Life-Size This model is an exact life-size model and shows all parts in great detail. It is hand assembled to ensure intricate detailing and durability. The main parts are hinged and can be easily removed.



**E3D.1912**

## Thalamus,7parts

Life-Size This model is an exact life-size model and shows all parts in great detail. It is hand assembled to ensure intricate detailing and durability. The main parts are hinged and can be easily removed.



### E3D.1910

## Thalamus,2parts

Life-Size This model is an exact life-size model and shows all parts in great detail. It is hand assembled to ensure intricate detailing and durability. The main parts are hinged and can be easily removed.



### E3D.1911

## Thalamus,5parts

Life-Size This model is an exact life-size model and shows all parts in great detail. It is hand assembled to ensure intricate detailing and durability. The main parts are hinged and can be easily removed.



### **E3D.1908**

## Human Head, Natural Size, 4 parts

Life-Size This model is an exact life-size model and shows all parts in great detail. It is hand assembled to ensure intricate detailing and durability. The main parts are hinged and can be easily removed.



### **E3D.1909**

## Front Neck Muscle Dissection Model

Life-Size This model is an exact life-size model and shows all parts in great detail. It is hand assembled to ensure intricate detailing and durability. The main parts are hinged and can be easily removed.





### **E3D.1906**

## Dissection Model of head and chest

Life-Size This model is an exact life-size model and shows all parts in great detail. It is hand assembled to ensure intricate detailing and durability. The main parts are hinged and can be easily removed.



### **E3D.1907**

## Head With Pharynx Mscles

Life-Size This model is an exact life-size model and shows all parts in great detail. It is hand assembled to ensure intricate detailing and durability. The main parts are hinged and can be easily removed.



**E3D.1903**

## Head Atery Model

Life-Size This model is an exact life-size model and shows all parts in great detail. It is hand assembled to ensure intricate detailing and durability. The main parts are hinged and can be easily removed.



**E3D.1904**

## Head Nerve Model

Life-Size This model is an exact life-size model and shows all parts in great detail. It is hand assembled to ensure intricate detailing and durability. The main parts are hinged and can be easily removed.



**E3D.1905**

## Head Vein Model

Life-Size This model is an exact life-size model and shows all parts in great detail. It is hand assembled to ensure intricate detailing and durability. The main parts are hinged and can be easily removed.



**E3D.1901**

## Median and Frontal Section of the Head

Life-Size This model is an exact life-size model and shows all parts in great detail. It is hand assembled to ensure intricate detailing and durability. The main parts are hinged and can be easily removed.



**E3D.1902**

## Half Head Model

Life-Size This model is an exact life-size model and shows all parts in great detail. It is hand assembled to ensure intricate detailing and durability. The main parts are hinged and can be easily removed.



**E3C.1940**

## Human Skeleton with ligament and small bone

Life-Size This model is an exact life-size model and shows all parts in great detail. It is hand assembled to ensure intricate detailing and durability. The main parts are hinged and can be easily removed.



**E3C.1941**

## Elbow Joint

Life-Size This model is an exact life-size model and shows all parts in great detail. It is hand assembled to ensure intricate detailing and durability. The main parts are hinged and can be easily removed.



**E3C.1939**

## Child's Skull Model

Life-Size This model is an exact life-size model and shows all parts in great detail. It is hand assembled to ensure intricate detailing and durability. The main parts are hinged and can be easily removed.



**E3C.1937**

## Half Disarticulate Human Skeleton

Life-Size This model is an exact life-size model and shows all parts in great detail. It is hand assembled to ensure intricate detailing and durability. The main parts are hinged and can be easily removed.



**E3C.1938**

## Half Disarticulate Human Skeleton

Life-Size This model is an exact life-size model and shows all parts in great detail. It is hand assembled to ensure intricate detailing and durability. The main parts are hinged and can be easily removed.



### E3C.1935

## Hip Joint Model with Ligament

Life-Size This model is an exact life-size model and shows all parts in great detail. It is hand assembled to ensure intricate detailing and durability. The main parts are hinged and can be easily removed.



### E3C.1936

## Disarticulate Human Skeleton

Life-Size This model is an exact life-size model and shows all parts in great detail. It is hand assembled to ensure intricate detailing and durability. The main parts are hinged and can be easily removed.



### **E3C.1934**

## Elbow Joint(Small Size)

Life-Size This model is an exact life-size model and shows all parts in great detail. It is hand assembled to ensure intricate detailing and durability. The main parts are hinged and can be easily removed.



### **E3C.1933**

## Human Skull 1/2Natural Size

Life-Size This model is an exact life-size model and shows all parts in great detail. It is hand assembled to ensure intricate detailing and durability. The main parts are hinged and can be easily removed.





### E3C.1931

## Model Of pelvis

Life-Size This model is an exact life-size model and shows all parts in great detail. It is hand assembled to ensure intricate detailing and durability. The main parts are hinged and can be easily removed.



### E3C.1932

## Color Flexible Spine Column With Femur Heads

Life-Size This model is an exact life-size model and shows all parts in great detail. It is hand assembled to ensure intricate detailing and durability. The main parts are hinged and can be easily removed.



### **E3C.1929**

## Flexible Spine Column

Life-Size This model is an exact life-size model and shows all parts in great detail. It is hand assembled to ensure intricate detailing and durability. The main parts are hinged and can be easily removed.



### **E3C.1930**

## Model Of Male Pelvis With lumbar Vertebra

Life-Size This model is an exact life-size model and shows all parts in great detail. It is hand assembled to ensure intricate detailing and durability. The main parts are hinged and can be easily removed.



### E3C.1928

## Lumbar Vertebra , Sacrum Bone With Spinal Nerves

Life-Size This model is an exact life-size model and shows all parts in great detail. It is hand assembled to ensure intricate detailing and durability. The main parts are hinged and can be easily removed.



### E3C.1926

## Cervical Vertebrae

Life-Size This model is an exact life-size model and shows all parts in great detail. It is hand assembled to ensure intricate detailing and durability. The main parts are hinged and can be easily removed.



**E3C.1927**

## Thoracic Vertebrae With Spinal Cord

Life-Size This model is an exact life-size model and shows all parts in great detail. It is hand assembled to ensure intricate detailing and durability. The main parts are hinged and can be easily removed.



**E3C.1924**

## Flexible Spine Column With Pelvis and rib

Life-Size This model is an exact life-size model and shows all parts in great detail. It is hand assembled to ensure intricate detailing and durability. The main parts are hinged and can be easily removed.



### **E3C.1925**

## 85cm, Human Skeleton

Life-Size This model is an exact life-size model and shows all parts in great detail. It is hand assembled to ensure intricate detailing and durability. The main parts are hinged and can be easily removed.



### **E3C.1922**

## Human Skull Natural Size with painted number

Life-Size This model is an exact life-size model and shows all parts in great detail. It is hand assembled to ensure intricate detailing and durability. The main parts are hinged and can be easily removed.



**E3C.1923**

## Knee Joint

Life-Size This model is an exact life-size model and shows all parts in great detail. It is hand assembled to ensure intricate detailing and durability. The main parts are hinged and can be easily removed.



**E3C.1920**

## Human Skeleton

Life-Size This model is an exact life-size model and shows all parts in great detail. It is hand assembled to ensure intricate detailing and durability. The main parts are hinged and can be easily removed.



**E3C.1921**

## Human Skeleton

Life-Size This model is an exact life-size model and shows all parts in great detail. It is hand assembled to ensure intricate detailing and durability. The main parts are hinged and can be easily removed.



**E3C.1919**

## Tongue Skelecion Model

Life-Size This model is an exact life-size model and shows all parts in great detail. It is hand assembled to ensure intricate detailing and durability. The main parts are hinged and can be easily removed.



### E3C.1918

## Human Skull with Painted Muscle,Natural Size

Life-Size This model is an exact life-size model and shows all parts in great detail. It is hand assembled to ensure intricate detailing and durability. The main parts are hinged and can be easily removed.



### E3C.1917

## Atlas and Axis with Occioital Bone

Life-Size This model is an exact life-size model and shows all parts in great detail. It is hand assembled to ensure intricate detailing and durability. The main parts are hinged and can be easily removed.





**E3C.1915**

## Human Skull Natural Size

Life-Size This model is an exact life-size model and shows all parts in great detail. It is hand assembled to ensure intricate detailing and durability. The main parts are hinged and can be easily removed.



**E3C.1916**

## Atlas and Axis

Life-Size This model is an exact life-size model and shows all parts in great detail. It is hand assembled to ensure intricate detailing and durability. The main parts are hinged and can be easily removed.



**E3C.1914**

## Leg Skeketon With Hip Bone, right

Life-Size This model is an exact life-size model and shows all parts in great detail. It is hand assembled to ensure intricate detailing and durability. The main parts are hinged and can be easily removed.



**E3C.1912**

## Shoulder Moder Natural Size

Life-Size This model is an exact life-size model and shows all parts in great detail. It is hand assembled to ensure intricate detailing and durability. The main parts are hinged and can be easily removed.



### E3C.1913

## Foot Bone Natural Size

Life-Size This model is an exact life-size model and shows all parts in great detail. It is hand assembled to ensure intricate detailing and durability. The main parts are hinged and can be easily removed.



### E3C.1910

## Hand Bone Natural Size

Life-Size This model is an exact life-size model and shows all parts in great detail. It is hand assembled to ensure intricate detailing and durability. The main parts are hinged and can be easily removed.



### **E3C.1911**

## Forearm with Hand Bone, Articulated

Life-Size This model is an exact life-size model and shows all parts in great detail. It is hand assembled to ensure intricate detailing and durability. The main parts are hinged and can be easily removed.



### **E3C.1909**

## Sacrum and Coccyx

Life-Size This model is an exact life-size model and shows all parts in great detail. It is hand assembled to ensure intricate detailing and durability. The main parts are hinged and can be easily removed.



### **E3C.1907**

## Female Pelvis Natural Size

Life-Size This model is an exact life-size model and shows all parts in great detail. It is hand assembled to ensure intricate detailing and durability. The main parts are hinged and can be easily removed.



### **E3C.1908**

## Male Pelvis Natural Size

Life-Size This model is an exact life-size model and shows all parts in great detail. It is hand assembled to ensure intricate detailing and durability. The main parts are hinged and can be easily removed.



### **E3C.1904**

## Flexible Spine With Femur Head and Painted Muscles

Life-Size This model is an exact life-size model and shows all parts in great detail. It is hand assembled to ensure intricate detailing and durability. The main parts are hinged and can be easily removed.



### **E3C.1905**

## Flexible Spine Column With Sacrum Bone Open

Life-Size This model is an exact life-size model and shows all parts in great detail. It is hand assembled to ensure intricate detailing and durability. The main parts are hinged and can be easily removed.



**E3C.1906**

## Flexible Spine Column

Life-Size This model is an exact life-size model and shows all parts in great detail. It is hand assembled to ensure intricate detailing and durability. The main parts are hinged and can be easily removed.



**E3C.1903**

## Flexible Spine With pelvis and femur head

Life-Size This model is an exact life-size model and shows all parts in great detail. It is hand assembled to ensure intricate detailing and durability. The main parts are hinged and can be easily removed.



### E3C.1902

## Flexible Spine With pelvis

Life-Size This model is an exact life-size model and shows all parts in great detail. It is hand assembled to ensure intricate detailing and durability. The main parts are hinged and can be easily removed.



### E3B.1908

## Muscle Figure,85cm,30parts

Life-Size This model is an exact life-size model and shows all parts in great detail. It is hand assembled to ensure intricate detailing and durability. The main parts are hinged and can be easily removed.





### **E3B.1909**

40cm, muscular model

Life-Size This model is an exact life-size model and shows all parts in great detail. It is hand assembled to ensure intricate detailing and durability. The main parts are hinged and can be easily removed.



### **E3C.1901**

Bone Structure

Life-Size This model is an exact life-size model and shows all parts in great detail. It is hand assembled to ensure intricate detailing and durability. The main parts are hinged and can be easily removed.



### **E3B.1907**

25cm,muscular model

Life-Size This model is an exact life-size model and shows all parts in great detail. It is hand assembled to ensure intricate detailing and durability. The main parts are hinged and can be easily removed.



### **E3B.1906**

Model of gradational dissection of lower limbs

Life-Size This model is an exact life-size model and shows all parts in great detail. It is hand assembled to ensure intricate detailing and durability. The main parts are hinged and can be easily removed.



### E3B.1904

## Model of gradational dissection of upper limbs

Life-Size This model is an exact life-size model and shows all parts in great detail. It is hand assembled to ensure intricate detailing and durability. The main parts are hinged and can be easily removed.



### E3B.1905

## Skeleton Muscle of Fibre Model

Life-Size This model is an exact life-size model and shows all parts in great detail. It is hand assembled to ensure intricate detailing and durability. The main parts are hinged and can be easily removed.



### **E3B.1903**

## Upper Limbs With Deep-seated Muscle

Life-Size This model is an exact life-size model and shows all parts in great detail. It is hand assembled to ensure intricate detailing and durability. The main parts are hinged and can be easily removed.



### **E3B.1902**

## 50cm,superficial muscular Torso

Life-Size This model is an exact life-size model and shows all parts in great detail. It is hand assembled to ensure intricate detailing and durability. The main parts are hinged and can be easily removed.



### E3A.1920

85CM Torso,12 parts,

Life-Size This model is an exact life-size model and shows all parts in great detail. It is hand assembled to ensure intricate detailing and durability. The main parts are hinged and can be easily removed.



### E3B.1901

Upper Arm Muscle Model

Life-Size This model is an exact life-size model and shows all parts in great detail. It is hand assembled to ensure intricate detailing and durability. The main parts are hinged and can be easily removed.



### E3A.1918

## Classic Unisex Torso With Open Back,17 parts,85CM

Life-Size This model is an exact life-size model and shows all parts in great detail. It is hand assembled to ensure intricate detailing and durability. The main parts are hinged and can be easily removed.



### E3A.1919

## Dual-Sex Exchange Deluxe muscle figure

Life-Size This model is an exact life-size model and shows all parts in great detail. It is hand assembled to ensure intricate detailing and durability. The main parts are hinged and can be easily removed.



### E3A.1917

## Duel-Sex Exchange Deluxe Torso,Open Back,27 parts

Life-Size This model is an exact life-size model and shows all parts in great detail. It is hand assembled to ensure intricate detailing and durability. The main parts are hinged and can be easily removed.



### E3A.1916

## Duel-Sex Exchange Deluxe Torso,Open Back, 27 parts

Life-Size This model is an exact life-size model and shows all parts in great detail. It is hand assembled to ensure intricate detailing and durability. The main parts are hinged and can be easily removed.



### **E3A.1915**

## Muscles Of Hand,nature size,7parts

Life-Size This model is an exact life-size model and shows all parts in great detail. It is hand assembled to ensure intricate detailing and durability. The main parts are hinged and can be easily removed.



### **E3A.1913**

## Muscles Of foot,9parts

Life-Size This model is an exact life-size model and shows all parts in great detail. It is hand assembled to ensure intricate detailing and durability. The main parts are hinged and can be easily removed.





### **E3A.1914**

## Muscles Of Hand,magnified,3parts

Life-Size This model is an exact life-size model and shows all parts in great detail. It is hand assembled to ensure intricate detailing and durability. The main parts are hinged and can be easily removed.



### **E3A.1912**

## 50cm,Mini Dual-Sex Torso (African Type),16 parts

Life-Size This model is an exact life-size model and shows all parts in great detail. It is hand assembled to ensure intricate detailing and durability. The main parts are hinged and can be easily removed.



### E3A.1910

## Classic Unisex Torso,18 parts,85CM

Life-Size This model is an exact life-size model and shows all parts in great detail. It is hand assembled to ensure intricate detailing and durability. The main parts are hinged and can be easily removed.



### E3A.1911

## 50cm,Mini Torso(European people),17 parts

Life-Size This model is an exact life-size model and shows all parts in great detail. It is hand assembled to ensure intricate detailing and durability. The main parts are hinged and can be easily removed.



### E3A.1908

## Relief Model of foot muscle,1part

Life-Size This model is an exact life-size model and shows all parts in great detail. It is hand assembled to ensure intricate detailing and durability. The main parts are hinged and can be easily removed.



### E3A.1909

## 50cm,Mini Torso(Asian people),16 parts

Life-Size This model is an exact life-size model and shows all parts in great detail. It is hand assembled to ensure intricate detailing and durability. The main parts are hinged and can be easily removed.



### E3A.1906

## Regional Anatomy Of Foot,3parts

Life-Size This model is an exact life-size model and shows all parts in great detail. It is hand assembled to ensure intricate detailing and durability. The main parts are hinged and can be easily removed.



### E3A.1907

## Model of foot Dissection,natural size,1part

Life-Size This model is an exact life-size model and shows all parts in great detail. It is hand assembled to ensure intricate detailing and durability. The main parts are hinged and can be easily removed.



### E3A.1904

## Classic Unisex Torso With Open Back, 17 parts, 85CM

Life-Size This model is an exact life-size model and shows all parts in great detail. It is hand assembled to ensure intricate detailing and durability. The main parts are hinged and can be easily removed.



### E3A.1905

## Regional Anatomy of Hand, 4 parts

Life-Size This model is an exact life-size model and shows all parts in great detail. It is hand assembled to ensure intricate detailing and durability. The main parts are hinged and can be easily removed.



### E3A.1903

50cm,Mini Torso,12 parts

Life-Size This model is an exact life-size model and shows all parts in great detail. It is hand assembled to ensure intricate detailing and durability. The main parts are hinged and can be easily removed.



### E3A.1901

Dual-Sex Exchange Torso, 26 parts(B)

Life-Size This model is an exact life-size model and shows all parts in great detail. It is hand assembled to ensure intricate detailing and durability. The main parts are hinged and can be easily removed.



### **E3A.1902**

## Classic Unisex Torso With Open Back,18 parts,85CM

Life-Size This model is an exact life-size model and shows all parts in great detail. It is hand assembled to ensure intricate detailing and durability. The main parts are hinged and can be easily removed.



### **E3A.1900**

## Dual-Sex Exchange Torso, 25 parts(A)

Life-Size This model is an exact life-size model and shows all parts in great detail. It is hand assembled to ensure intricate detailing and durability. The main parts are hinged and can be easily removed.



**E32.0725**

## Human Body Model

Life-Size This model is an exact life-size model and shows all parts in great detail. It is hand assembled to ensure intricate detailing and durability. The main parts are hinged and can be easily removed.



**E32.0726**

## Human Muscle Model

Life-Size This model is an exact life-size model and shows all parts in great detail. It is hand assembled to ensure intricate detailing and durability. The main parts are hinged and can be easily removed.





**E32.0723**

## Human Body Model

Life-Size This model is an exact life-size model and shows all parts in great detail. It is hand assembled to ensure intricate detailing and durability. The main parts are hinged and can be easily removed.



**E32.0724**

## Human Body Model

Life-Size This model is an exact life-size model and shows all parts in great detail. It is hand assembled to ensure intricate detailing and durability. The main parts are hinged and can be easily removed.



**E32.0722**

## Human Body Model

Life-Size This model is an exact life-size model and shows all parts in great detail. It is hand assembled to ensure intricate detailing and durability. The main parts are hinged and can be easily removed.



**E32.0720**

## Imaging Principle of Eye Model

Life-Size This model is an exact life-size model and shows all parts in great detail. It is hand assembled to ensure intricate detailing and durability. The main parts are hinged and can be easily removed.



**E32.0721**

## Giant Eye Dissection Model

Life-Size This model is an exact life-size model and shows all parts in great detail. It is hand assembled to ensure intricate detailing and durability. The main parts are hinged and can be easily removed.



**E32.0718**

## Female Urogenital System Model

Life-Size This model is an exact life-size model and shows all parts in great detail. It is hand assembled to ensure intricate detailing and durability. The main parts are hinged and can be easily removed.



**E32.0719**

## Eyeball Model

Life-Size This model is an exact life-size model and shows all parts in great detail. It is hand assembled to ensure intricate detailing and durability. The main parts are hinged and can be easily removed.



**E32.0717**

## Male Urogenital System Model

Life-Size This model is an exact life-size model and shows all parts in great detail. It is hand assembled to ensure intricate detailing and durability. The main parts are hinged and can be easily removed.



**E32.0715**

## Sensitive Part of Tongue Model

Life-Size This model is an exact life-size model and shows all parts in great detail. It is hand assembled to ensure intricate detailing and durability. The main parts are hinged and can be easily removed.



**E32.0716**

## Mouth Model

Life-Size This model is an exact life-size model and shows all parts in great detail. It is hand assembled to ensure intricate detailing and durability. The main parts are hinged and can be easily removed.



**E32.0713**

## Brain Stem Model

Life-Size This model is an exact life-size model and shows all parts in great detail. It is hand assembled to ensure intricate detailing and durability. The main parts are hinged and can be easily removed.



**E32.0714**

## Kidney, Nephron, Renal Corpuscle Model

Life-Size This model is an exact life-size model and shows all parts in great detail. It is hand assembled to ensure intricate detailing and durability. The main parts are hinged and can be easily removed.



**E32.0712**

## Brain Model

Life-Size This model is an exact life-size model and shows all parts in great detail. It is hand assembled to ensure intricate detailing and durability. The main parts are hinged and can be easily removed.



**E32.0709**

## Lymph Model

Life-Size This model is an exact life-size model and shows all parts in great detail. It is hand assembled to ensure intricate detailing and durability. The main parts are hinged and can be easily removed.



**E32.0710**

## Larynx Structure Model

Life-Size This model is an exact life-size model and shows all parts in great detail. It is hand assembled to ensure intricate detailing and durability. The main parts are hinged and can be easily removed.



**E32.0711**

## Alveolus Model

Life-Size This model is an exact life-size model and shows all parts in great detail. It is hand assembled to ensure intricate detailing and durability. The main parts are hinged and can be easily removed.





**E32.0707**

## Ear Structure Model

Life-Size This model is an exact life-size model and shows all parts in great detail. It is hand assembled to ensure intricate detailing and durability. The main parts are hinged and can be easily removed.



**E32.0708**

## Skin Structure Model

Life-Size This model is an exact life-size model and shows all parts in great detail. It is hand assembled to ensure intricate detailing and durability. The main parts are hinged and can be easily removed.



**E32.0705**

## Heart Structure Enlarged Model

Life-Size This model is an exact life-size model and shows all parts in great detail. It is hand assembled to ensure intricate detailing and durability. The main parts are hinged and can be easily removed.



**E32.0706**

## Heart Structure Model

Life-Size This model is an exact life-size model and shows all parts in great detail. It is hand assembled to ensure intricate detailing and durability. The main parts are hinged and can be easily removed.



**E32.0702**

## Human Heart & Blood Demo.

Life-Size This model is an exact life-size model and shows all parts in great detail. It is hand assembled to ensure intricate detailing and durability. The main parts are hinged and can be easily removed.



**E32.0703**

## Urine Path Dynamic Model

Life-Size This model is an exact life-size model and shows all parts in great detail. It is hand assembled to ensure intricate detailing and durability. The main parts are hinged and can be easily removed.



**E32.0704**

## Stomach Model

Life-Size This model is an exact life-size model and shows all parts in great detail. It is hand assembled to ensure intricate detailing and durability. The main parts are hinged and can be easily removed.



**E32.0701**

## Human Breath Dynamic Model

Life-Size This model is an exact life-size model and shows all parts in great detail. It is hand assembled to ensure intricate detailing and durability. The main parts are hinged and can be easily removed.



### E32.19B2

## Atlas and Axis with Occipital Bone

Life-Size This model is an exact life-size model and shows all parts in great detail. It is hand assembled to ensure intricate detailing and durability. The main parts are hinged and can be easily removed.



### E32.19C5

## Flexible Spine

Life-Size This model is an exact life-size model and shows all parts in great detail. It is hand assembled to ensure intricate detailing and durability. The main parts are hinged and can be easily removed.



### E32.19C2

## Flexible Spine

Life-Size This model is an exact life-size model and shows all parts in great detail. It is hand assembled to ensure intricate detailing and durability. The main parts are hinged and can be easily removed.



### E32.19C3

## Flexible Spine With Femur Head

Life-Size This model is an exact life-size model and shows all parts in great detail. It is hand assembled to ensure intricate detailing and durability. The main parts are hinged and can be easily removed.



#### **E32.19C4**

### Flexible Spine Column With Sacrum Bone Open

Life-Size This model is an exact life-size model and shows all parts in great detail. It is hand assembled to ensure intricate detailing and durability. The main parts are hinged and can be easily removed.



#### **E32.19B9**

### Sphenoid Bone

Life-Size This model is an exact life-size model and shows all parts in great detail. It is hand assembled to ensure intricate detailing and durability. The main parts are hinged and can be easily removed.



### **E32.19C1**

## Flexible Spine With Femur Head and Painted Muscles

Life-Size This model is an exact life-size model and shows all parts in great detail. It is hand assembled to ensure intricate detailing and durability. The main parts are hinged and can be easily removed.



### **E32.19B7**

## Model Of Pelvis With 4th, 5th lumbar Vertebra

Life-Size This model is an exact life-size model and shows all parts in great detail. It is hand assembled to ensure intricate detailing and durability. The main parts are hinged and can be easily removed.





### **E32.19B8**

## pelvis With 4th ,5th Lumbar and Femur Head

Life-Size This model is an exact life-size model and shows all parts in great detail. It is hand assembled to ensure intricate detailing and durability. The main parts are hinged and can be easily removed.



### **E32.19B5**

## Hand Skeleton,With portions Of Ulna and radius

Life-Size This model is an exact life-size model and shows all parts in great detail. It is hand assembled to ensure intricate detailing and durability. The main parts are hinged and can be easily removed.



### E32.19B6

## Leg Skeketon With Hip Bone, right

Life-Size This model is an exact life-size model and shows all parts in great detail. It is hand assembled to ensure intricate detailing and durability. The main parts are hinged and can be easily removed.



### E32.19B4

## Safrum and Coccyx

Life-Size This model is an exact life-size model and shows all parts in great detail. It is hand assembled to ensure intricate detailing and durability. The main parts are hinged and can be easily removed.



**E32.19B1**

## Osteoporosis Model

Life-Size This model is an exact life-size model and shows all parts in great detail. It is hand assembled to ensure intricate detailing and durability. The main parts are hinged and can be easily removed.



**E32.19B3**

## Atlas and Axis

Life-Size This model is an exact life-size model and shows all parts in great detail. It is hand assembled to ensure intricate detailing and durability. The main parts are hinged and can be easily removed.



### E32.19A8

## Thoracic Vertebrae With Spinal Cord

Life-Size This model is an exact life-size model and shows all parts in great detail. It is hand assembled to ensure intricate detailing and durability. The main parts are hinged and can be easily removed.



### E32.19A9

## Lumbar Vertebra ,Sacrum Bone ,Spinal Nerves

Life-Size This model is an exact life-size model and shows all parts in great detail. It is hand assembled to ensure intricate detailing and durability. The main parts are hinged and can be easily removed.



### E32.19A7

## Cross Section Through Heart Level

Life-Size This model is an exact life-size model and shows all parts in great detail. It is hand assembled to ensure intricate detailing and durability. The main parts are hinged and can be easily removed.



### E32.19A5

## Incisor, Canine Tooth and Molar

Life-Size This model is an exact life-size model and shows all parts in great detail. It is hand assembled to ensure intricate detailing and durability. The main parts are hinged and can be easily removed.



### E32.19A6

## Cervical Vertebrae,occipital Bone,Spinal Cord

Life-Size This model is an exact life-size model and shows all parts in great detail. It is hand assembled to ensure intricate detailing and durability. The main parts are hinged and can be easily removed.



### E32.19A2

## Model Of Placenta

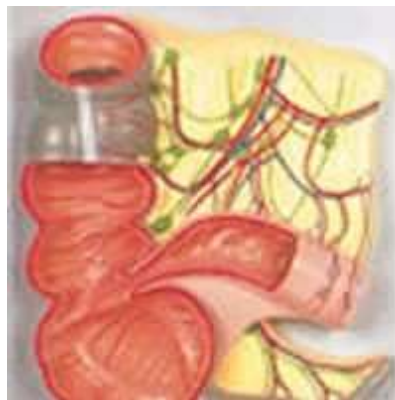
Life-Size This model is an exact life-size model and shows all parts in great detail. It is hand assembled to ensure intricate detailing and durability. The main parts are hinged and can be easily removed.



### E32.19A3

## Rectum and Anal Canal

Life-Size This model is an exact life-size model and shows all parts in great detail. It is hand assembled to ensure intricate detailing and durability. The main parts are hinged and can be easily removed.



### E32.19A4

## Caecum and appendix

Life-Size This model is an exact life-size model and shows all parts in great detail. It is hand assembled to ensure intricate detailing and durability. The main parts are hinged and can be easily removed.



**E32.19A1**

## Male Perineum

Life-Size This model is an exact life-size model and shows all parts in great detail. It is hand assembled to ensure intricate detailing and durability. The main parts are hinged and can be easily removed.



**E32.1999**

## Female Pelvis with 8 Weeks Old Embryo

Life-Size This model is an exact life-size model and shows all parts in great detail. It is hand assembled to ensure intricate detailing and durability. The main parts are hinged and can be easily removed.





**E32.1996**

## Mediastinum

Life-Size This model is an exact life-size model and shows all parts in great detail. It is hand assembled to ensure intricate detailing and durability. The main parts are hinged and can be easily removed.



**E32.1998**

## Model Of Testis

Life-Size This model is an exact life-size model and shows all parts in great detail. It is hand assembled to ensure intricate detailing and durability. The main parts are hinged and can be easily removed.



**E32.1997**

## Model Of Bladder

Life-Size This model is an exact life-size model and shows all parts in great detail. It is hand assembled to ensure intricate detailing and durability. The main parts are hinged and can be easily removed.



**E32.1994**

## Model Of Nerves At Neck Region

Life-Size This model is an exact life-size model and shows all parts in great detail. It is hand assembled to ensure intricate detailing and durability. The main parts are hinged and can be easily removed.



**E32.1995**

## Model Of Head Neck

Life-Size This model is an exact life-size model and shows all parts in great detail. It is hand assembled to ensure intricate detailing and durability. The main parts are hinged and can be easily removed.



**E32.1992**

## pancreas, Duodenum and Spleen

Life-Size This model is an exact life-size model and shows all parts in great detail. It is hand assembled to ensure intricate detailing and durability. The main parts are hinged and can be easily removed.



**E32.1993**

## Head With Pharynx Mscles

Life-Size This model is an exact life-size model and shows all parts in great detail. It is hand assembled to ensure intricate detailing and durability. The main parts are hinged and can be easily removed.



**E32.1991**

## Deluxe Model of Kidney With Adrenal

Life-Size This model is an exact life-size model and shows all parts in great detail. It is hand assembled to ensure intricate detailing and durability. The main parts are hinged and can be easily removed.



**E32.1989**

## Transparent Model Of Lung

Life-Size This model is an exact life-size model and shows all parts in great detail. It is hand assembled to ensure intricate detailing and durability. The main parts are hinged and can be easily removed.



**E32.1990**

## Model Of Segmental Bronchi

Life-Size This model is an exact life-size model and shows all parts in great detail. It is hand assembled to ensure intricate detailing and durability. The main parts are hinged and can be easily removed.



**E32.1988**

## Auditory Ossicles (Malleus Inchu Stapes)

Life-Size This model is an exact life-size model and shows all parts in great detail. It is hand assembled to ensure intricate detailing and durability. The main parts are hinged and can be easily removed.



**E32.1986**

## Spinal Cord, Spinal Nerve and Sympathetic Column

Life-Size This model is an exact life-size model and shows all parts in great detail. It is hand assembled to ensure intricate detailing and durability. The main parts are hinged and can be easily removed.



**E32.1987**

## Model Of Pulmonary Segment

Life-Size This model is an exact life-size model and shows all parts in great detail. It is hand assembled to ensure intricate detailing and durability. The main parts are hinged and can be easily removed.



**E32.1984**

## Brain Stem

Life-Size This model is an exact life-size model and shows all parts in great detail. It is hand assembled to ensure intricate detailing and durability. The main parts are hinged and can be easily removed.



**E32.1985**

## Model Of Inner Ear

Life-Size This model is an exact life-size model and shows all parts in great detail. It is hand assembled to ensure intricate detailing and durability. The main parts are hinged and can be easily removed.



**E32.1982**

## Giant Eye In Orbit I and Giant Eye In OrbitII

Life-Size This model is an exact life-size model and shows all parts in great detail. It is hand assembled to ensure intricate detailing and durability. The main parts are hinged and can be easily removed.





**E32.1983**

## Brain With Different Functional Area

Life-Size This model is an exact life-size model and shows all parts in great detail. It is hand assembled to ensure intricate detailing and durability. The main parts are hinged and can be easily removed.



**E32.1981**

## Dual-Sex Exchangable,25 parts Deluxe

Life-Size This model is an exact life-size model and shows all parts in great detail. It is hand assembled to ensure intricate detailing and durability. The main parts are hinged and can be easily removed.



**E32.1980**

## Dual-Sex Exchangable Deluxe Torso, Open Back

Life-Size This model is an exact life-size model and shows all parts in great detail. It is hand assembled to ensure intricate detailing and durability. The main parts are hinged and can be easily removed.



**E32.1979**

## Organs Of Endocrine System (relief)

Life-Size This model is an exact life-size model and shows all parts in great detail. It is hand assembled to ensure intricate detailing and durability. The main parts are hinged and can be easily removed.



**E32.1977**

## Baby Care Model

Life-Size This model is an exact life-size model and shows all parts in great detail. It is hand assembled to ensure intricate detailing and durability. The main parts are hinged and can be easily removed.



**E32.1978**

## 58cm Acupuncture Model

Life-Size This model is an exact life-size model and shows all parts in great detail. It is hand assembled to ensure intricate detailing and durability. The main parts are hinged and can be easily removed.



**E32.1976**

## Periodic Changes Of Female

Life-Size This model is an exact life-size model and shows all parts in great detail. It is hand assembled to ensure intricate detailing and durability. The main parts are hinged and can be easily removed.



**E32.1975**

## Series Models Of Foetus Development

Life-Size This model is an exact life-size model and shows all parts in great detail. It is hand assembled to ensure intricate detailing and durability. The main parts are hinged and can be easily removed.



**E32.1973**

## External Male Reproductive Organ

Life-Size This model is an exact life-size model and shows all parts in great detail. It is hand assembled to ensure intricate detailing and durability. The main parts are hinged and can be easily removed.



**E32.1974**

## Foetus Development Model (relief)

Life-Size This model is an exact life-size model and shows all parts in great detail. It is hand assembled to ensure intricate detailing and durability. The main parts are hinged and can be easily removed.



**E32.1971**

## Block Model Of Male Pelvis

Life-Size This model is an exact life-size model and shows all parts in great detail. It is hand assembled to ensure intricate detailing and durability. The main parts are hinged and can be easily removed.



**E32.1972**

## Internal Female Reproductive Organ

Life-Size This model is an exact life-size model and shows all parts in great detail. It is hand assembled to ensure intricate detailing and durability. The main parts are hinged and can be easily removed.



**E32.1970**

## Block Model Of Female Pelvis

Life-Size This model is an exact life-size model and shows all parts in great detail. It is hand assembled to ensure intricate detailing and durability. The main parts are hinged and can be easily removed.



**E32.1969**

## Male Genital Organ

Life-Size This model is an exact life-size model and shows all parts in great detail. It is hand assembled to ensure intricate detailing and durability. The main parts are hinged and can be easily removed.



**E32.1968**

## Female Genital Organ

Life-Size This model is an exact life-size model and shows all parts in great detail. It is hand assembled to ensure intricate detailing and durability. The main parts are hinged and can be easily removed.



**E32.1966**

## Male and Female Pelvis & Urinary System

Life-Size This model is an exact life-size model and shows all parts in great detail. It is hand assembled to ensure intricate detailing and durability. The main parts are hinged and can be easily removed.





**E32.1967**

## Spermiogenesis

Life-Size This model is an exact life-size model and shows all parts in great detail. It is hand assembled to ensure intricate detailing and durability. The main parts are hinged and can be easily removed.



**E32.1965**

## Kidney With Adrenal Gland ,2 parts

Life-Size This model is an exact life-size model and shows all parts in great detail. It is hand assembled to ensure intricate detailing and durability. The main parts are hinged and can be easily removed.



**E32.1963**

## Kidney, Nephron, Glomerulus

Life-Size This model is an exact life-size model and shows all parts in great detail. It is hand assembled to ensure intricate detailing and durability. The main parts are hinged and can be easily removed.



**E32.1964**

## Kidney With Adrenal Gland ,2 parts, Natural Size

Life-Size This model is an exact life-size model and shows all parts in great detail. It is hand assembled to ensure intricate detailing and durability. The main parts are hinged and can be easily removed.



**E32.1962**

## Skin Model(relief)

Life-Size This model is an exact life-size model and shows all parts in great detail. It is hand assembled to ensure intricate detailing and durability. The main parts are hinged and can be easily removed.



**E32.1961**

## Block model Of Skin

Life-Size This model is an exact life-size model and shows all parts in great detail. It is hand assembled to ensure intricate detailing and durability. The main parts are hinged and can be easily removed.



**E32.1960**

## Teeth Care Model

Life-Size This model is an exact life-size model and shows all parts in great detail. It is hand assembled to ensure intricate detailing and durability. The main parts are hinged and can be easily removed.



**E32.1958**

## Villus

Life-Size This model is an exact life-size model and shows all parts in great detail. It is hand assembled to ensure intricate detailing and durability. The main parts are hinged and can be easily removed.



**E32.1959**

## Villus

Life-Size This model is an exact life-size model and shows all parts in great detail. It is hand assembled to ensure intricate detailing and durability. The main parts are hinged and can be easily removed.



**E32.1956**

## Liver 1.5 Times Dnlarged

Life-Size This model is an exact life-size model and shows all parts in great detail. It is hand assembled to ensure intricate detailing and durability. The main parts are hinged and can be easily removed.



**E32.1957**

## Section Through Digestive Organ(relief)

Life-Size This model is an exact life-size model and shows all parts in great detail. It is hand assembled to ensure intricate detailing and durability. The main parts are hinged and can be easily removed.



**E32.1955**

## Liver Natural Size 1part

Life-Size This model is an exact life-size model and shows all parts in great detail. It is hand assembled to ensure intricate detailing and durability. The main parts are hinged and can be easily removed.



**E32.1953**

## Stomach 2 parts

Life-Size This model is an exact life-size model and shows all parts in great detail. It is hand assembled to ensure intricate detailing and durability. The main parts are hinged and can be easily removed.



**E32.1954**

## Lower Jaw Model

Life-Size This model is an exact life-size model and shows all parts in great detail. It is hand assembled to ensure intricate detailing and durability. The main parts are hinged and can be easily removed.



**E32.1951**

## Human Digestive System 2 parts

Life-Size This model is an exact life-size model and shows all parts in great detail. It is hand assembled to ensure intricate detailing and durability. The main parts are hinged and can be easily removed.



**E32.1952**

## Stomach Natural Size

Life-Size This model is an exact life-size model and shows all parts in great detail. It is hand assembled to ensure intricate detailing and durability. The main parts are hinged and can be easily removed.





**E32.1950**

## All Types Of Blood Cell

Life-Size This model is an exact life-size model and shows all parts in great detail. It is hand assembled to ensure intricate detailing and durability. The main parts are hinged and can be easily removed.

Алматы (7273)495-231  
 Ангарск (3955)60-70-56  
 Архангельск (8182)63-90-72  
 Астрахань (8512)99-46-04  
 Барнаул (3852)73-04-60  
 Белгород (4722)40-23-64  
 Благовещенск (4162)22-76-07  
 Брянск (4832)59-03-52  
 Владивосток (423)249-28-31  
 Владикавказ (8672)28-90-48  
 Владимир (4922)49-43-18  
 Волгоград (844)278-03-48  
 Вологда (8172)26-41-59  
 Воронеж (473)204-51-73  
 Екатеринбург (343)384-55-89

Ижевск (3412)26-03-58  
 Иваново (4932)77-34-06  
 Иркутск (395)279-98-46  
 Казань (843)206-01-48  
 Калининград (4012)72-03-81  
 Калуга (4842)92-23-67  
 Кемерово (3842)65-04-62  
 Киров (8332)68-02-04  
 Коломна (4966)23-41-49  
 Кострома (4942)77-07-48  
 Краснодар (861)203-40-90  
 Красноярск (391)204-63-61  
 Курск (4712)77-13-04  
 Курган (3522)50-90-47  
 Липецк (4742)52-20-81

Киргизия (996)312-96-26-47

Магнитогорск (3519)55-03-13  
 Москва (495)268-04-70  
 Мурманск (8152)59-64-93  
 Набережные Челны (8552)20-53-41  
 Нижний Новгород (831)429-08-12  
 Новокузнецк (3843)20-46-81  
 Ноябрьск (3496)41-32-12  
 Новосибирск (383)227-86-73  
 Ноябрьск (3496)41-32-12  
 Омск (3812)21-46-40  
 Орел (4862)44-53-42  
 Оренбург (3532)37-68-04  
 Пенза (8412)22-31-16  
 Петрозаводск (8142)55-98-37  
 Псков (8112)59-10-37

Россия (495)268-04-70

Пермь (342)205-81-47  
 Ростов-на-Дону (863)308-18-15  
 Рязань (4912)46-61-64  
 Самара (846)206-03-16  
 Саранск (8342)22-96-24  
 Санкт-Петербург (812)309-46-40  
 Саратов (845)249-38-78  
 Севастополь (8692)22-31-93  
 Симферополь (3652)67-13-56  
 Смоленск (4812)29-41-54  
 Сочи (862)225-72-31  
 Ставрополь (8652)20-65-13  
 Сыктывкар (8212)25-95-17  
 Сургут (3462)77-98-35  
 Тамбов (4752)50-40-97

Казахстан (772)734-952-31

Тверь (4822)63-31-35  
 Тольяти (8482)63-91-07  
 Рязань (4912)46-61-64  
 Тула (4872)33-79-87  
 Тюмень (3452)66-21-18  
 Улан-Удэ (3012)59-97-51  
 Ульяновск (8422)24-23-59  
 Уфа (347)229-48-12  
 Хабаровск (4212)92-98-04  
 Смоленск (4812)29-41-54  
 Челябинск (351)202-03-61  
 Череповец (8202)49-02-64  
 Чита (3022)38-34-83  
 Якутск (4112)23-90-97  
 Ярославль (4852)69-52-93